

IQLR

Vol. 4 Issue 1 \$5.00

May - June

1994

International QL Report

Megan Arsenault, USA - Roy Arsenault, USA - Bill Cable, USA - Dr. Howard Clase, CANADA - Frank Davis, USA - Carlo Delhez, NETHERLANDS - Doug Dewey, USA - Norman Dunbar, SCOTLAND - Ron Dunnett, UK - Bob Dyl, USA - Jurgen Falkenberg, GERMANY - Tony Firshman, UK - Martin Florichs, GERMANY - Dr. Eros Forenzi, ITALY - Bob Gilder, USA - Simon N Goodwin, UK - Franz Herrmann, GERMANY - Alan Hodge, USA - Will Horton, USA - Sidney Humphreys, UK - John J Impellizzeri, USA - Len Johnston, NORTHERN IRELAND - Dilwyn Jones, UK - W Geraint Jones, UK - Mark Knight, UK - Joe LaPunzina, USA - Doug LaVerne, USA - Mel E LaVerne, USA - A Parker Lewis III, USA - Bob Madaris, USA - Bob Malloy, USA - Salvadore Merino, SPAIN - Jochen Merz, GERMANY - Pal Monstad, NORWAY - Gary Norton, USA - Stephen Ostrander, USA - Taylor S Penrose, USA - March R Renick, USA - Tom Robbins, USA - Davide Santachiara, ITALY - Herb Schaaf, USA - Claude A J Schleyer, USA - Tim Swenson, USA - Dick Taylor, USA - Marco Ternelli, ITALY - Freddy Vachha, UK - Joachim & Nathan Van der Auwera, BELGIUM - Don Walterman, USA - Sherman E Waterman, USA - Megan Arsenault,

ANNIVERSARY ISSUE

HONORING OUR CONTRIBUTORS

USA - Roy Arsenault, USA - Bill Cable, USA - Dr. Howard Clase, CANADA - Frank Davis, USA - Carlo Delhez, NETHERLANDS - Doug Dewey, USA - Norman Dunbar, SCOTLAND - Ron Dunnett, UK - Bob Dyl, USA - Jurgen Falkenberg, GERMANY - Tony Firshman, UK - Martin Florichs, GERMANY - Dr. Eros Forenzi, ITALY - Bob Gilder, USA - Simon N Goodwin, UK - Franz Herrmann, GERMANY - Alan Hodge, USA - Will Horton, USA - Sidney Humphreys, UK - John J Impellizzeri, USA - Len Johnston, NORTHERN IRELAND - Dilwyn Jones, UK - W Geraint Jones, UK - Mark Knight, UK - Joe LaPunzina, USA - Doug LaVerne, USA - Mel E LaVerne, USA - A Parker Lewis III, USA - Bob Madaris, USA - Bob Malloy, USA - Salvadore Merino, SPAIN - Jochen Merz, GERMANY - Pal Monstad, NORWAY - Gary Norton, USA - Stephen Ostrander, USA - Taylor S Penrose, USA - March R Renick, USA - Tom Robbins, USA - Davide Santachiara, ITALY - Herb Schaaf, USA - Claude A J Schleyer, USA - Tim Swenson, USA - Dick Taylor, USA - Marco Ternelli, ITALY - Freddy Vachha, UK - Joachim & Nathan Van der Auwera, BELGIUM - Don Walterman, USA - Sherman Waterman, USA - Megan Arsenault, USA - Roy Arsenault, USA - Bill Cable, USA - Dr. Howard Clase, CANADA - Frank Davis, USA - Carlo Delhez, NETHERLANDS - Doug Dewey, USA - Norman Dunbar, SCOTLAND - Ron Dunnett, UK - Bob Dyl, USA - Jurgen Falkenberg, GERMANY - Tony Firshman, UK - Martin Florichs, GERMANY - Dr. Eros Forenzi, ITALY - Bob Gilder, USA - Simon N Goodwin, UK - Franz Herrmann, GERMANY - Alan Hodge, USA - Will Horton, USA - Sidney Humphreys, UK - John J Impellizzeri, USA - Len Johnston, NORTHERN IRELAND - Dilwyn Jones, UK - W Geraint Jones, UK - Mark Knight, UK - Joe LaPunzina, USA - Doug LaVerne, USA - Mel E LaVerne, USA - A Parker Lewis III

IQLR.....

International QL Report is published by:

IQLR
15 Kilburn Court
Newport, RI 02840
USA
Telephone/Fax : +1 401 849 3805

IQLR
23 Ben Culey Drive
Thetford, Norfolk IP24 1QJ
GREAT BRITAIN

PUBLISHER: Robert Dyl, Sr.

IQLR is published bi-monthly, our volume year runs from 1 May through 30 April. Subscriptions begin with the current issue at the time of sign up.

Subscription rates are as follows:

USA	\$20.00 per year
British Isles & Europe	£25.00 per year
Canada	\$23.00 (US Funds)
Central/South America	\$34.00 (US Funds)
Rest of World	\$40.00 (US Funds)

UK and European readers may send their subscriptions to our European office listed above. Postal, Euro, Bank and Personal Cheques in Pounds Sterling should be made payable to IQLR.

Payment in US \$ either in Postal, Bank, or Personal cheques or bank notes (£ or DM equivalent to the US \$ amount) should be sent to our North American office.

We welcome letters, comments, suggestions and articles from our readers. Our magazine is constantly changing to meet the needs and requirements of all QDOS users.

Articles submitted for publication should be on a 3.5" DD disk in Quill or Text87 format. To enhance your article (if at all possible) send Saved Screen dumps produced with the Sbytes command. Please specify where in the text you would like the screens placed.

Article and Advertising DEADLINES are as follows:

Issue 1	15 April
Issue 2	15 June
Issue 3	15 August
Issue 4	15 October
Issue 5	10 December
Issue 6	15 February

IQLR reserves the right to publish, edit, or reject any and all submitted material. Under no circumstances will IQLR be held liable for any direct, indirect, or consequential damage or loss arising out of the use or inability to use any of the material published in IQLR. The opinions expressed herein are those of the authors and are not necessarily those of the publisher.

This magazine is copyrighted and all material published remains the property of IQLR unless otherwise specified. Written permission from IQLR is required before use and or reproduction of material published herein. All copyrights and trademarks are acknowledged.

IQLR is produced using a Sinclair QL computer equipped with a Super Gold Card, Minerva ROM, Hermes co-processor, QIMI and Keyboard-90 interfaces. Masters are printed using Hewlett Packard DeskJet 500 and IIP LaserJet printers. The software used to produce the text of IQLR is Text87 Plus4.

Contents.....

- 3 Editor SE (Part 4)
- 13 Quill - Deskjet 500
- 19 MSDOS Lotus <--> QL Abasus
- 20 Linedesign Images Tip
- 22 Amadeus Interlink
- 29 QL Genealogist 2nd Edition
- 36 Town Crier
- 38 Talking to the World
- 45 Sinclair Internet Resources List
- 46 Correction
- 47 An Author's Response
- 49 ? Minerva Bug ?
- 51 CUESHELL Version 1.12
- 53 Routine Auto-Locator
- 54 International QL News
- 58 CONCORDE
- 60 LAST CALL "Miracle in Newport II"

Advertisers.....

- 15 ALBIN HESSLER SOFTWARE
- 16 DIGITAL PRECISION LTD
- 18 QUANTA
- 21 MECHANICAL AFFINITY
- 26 COMPUTER BUSINESS MART
- 27 DILWYN JONES COMPUTING
- 28 ERGON DEVELOPMENT
- 35 GRANGE TECHNOLOGY
- 37 JOCHEN MERZ SOFTWARE
- 48 J. D. HANNAM, INC.
- 50 QBOX USA
- 56 PROGS
- 57 W. N. RICHARSON & CO.
- 62 QUBBESOFT P/D
- 63 T F SERVICES
- 64 MIRACLE SYSTEMS LTD

EDITOR SE (Part 4)

Massapequa, New York, USA - Bob Gilder

" An Overview, Tutorial and some ramblings"

This section of the tutorial will be devoted to setting up ALTKEY (Hotkeys) commands within The EDITOR. If you haven't used ALTKEYS within a program for the QL, you will be in for a very pleasant surprise! Below is a SuperBASIC listing which will make 'life a lot easier' when working within EDITOR. All you have to do is simultaneously press the ALTKEY and the character designated to activate a command.



The SuperBASIC listing offers suggestions to you, the user, for activating commands within EDITOR. Note that almost any ASCII keyboard character may be used in combination with the ALTKEY. The characters can be letters, numbers or brackets and slash characters.

Writing your own ALTKEY commands should be easy, if you follow the Super BASIC listing below. Line 100 activates Toolkit II which is mandatory and Line 110 provides a reminder that the ALTKEY file must be installed in the QL before you load in The EDITOR program. Line 120 through line 310 are the ALTKEY assignments. You may change any of the ALTKEY statements, the initializing character and the commands which they will activate.

Line 120; The ALTKEY PROCedure is followed by an 'a' character nested in single quotes followed by a comma. CHR\$(240) represents the F3 function key and is followed by an ampersand (&) character. The EDITOR command itself is nested in double quotes. "KM1,4;KC4,1" to set up the main screen and command line colors as well as their complimentary colors for ink. An ampersand follows the command and joins with CHR\$(10), representing the ENTER command. The key press combination of ALT-a will instantly change your screen to green with black ink and the command line to black with green ink.

Line 160 will resize the EDITOR screen to 11 lines when the combined ALT and i character are depressed. This command is perfect for setting up two EDITOR programs on one screen. Use this command only after the second Editor screen is activated. Note the character codes are different from all of the rest of the SuperBASIC lines. CHR\$(246) is Function key, F9 (SHIFT-F4), and the combination of FILL\$ and CHR\$(209,11) moves UP Cursor 11 spaces. Without the function FILL\$ CHR\$(209) would have to be entered eleven times to move the cursor up!

Line 180 will provide another change for the screen and command color, however, setting the screen to white with black ink and the command line will be black with white ink. The purpose for this color combination is for use when I prepare screen dumps.

Lines 240, 270, and 280 require a user input at the command line; just enter a Filename and/ or you can change the drive number as well.

Line 300 requires the combination of ALT and the £ symbol to activate the '£_cmd' file which translates the £ character to a printer translate.

Line 310 activates the command BW.SER1 (Block Write to the printer) with the combined ALT and [character.

EDITOR SE - (CONT'D)

```
100 TK2 EXT: REMark Activate Toolkit II for ALTKEY initialization
110 : REMark Add this file to your EDITOR BOOT file
120 ALTKEY 'a',CHR$(240)&"KM1,4;KC4,1"&CHR$(10):REMark Set Main screen Green
& Command line Black

130 ALTKEY 'b',CHR$(240)&"b"&CHR$(10):REMark Cursor to bottom of file
140 ALTKEY 'd',CHR$(240)&"BH"&CHR$(10): REMark Set Block Hide
150 ALTKEY 'f',CHR$(240)&CHR$(102)&CHR$(32)&CHR$(32)&CHR$(10): REMark
Repeat current FIND string

160 ALTKEY 'i',CHR$(246)&FILL$(CHR$(209),11)&CHR$(10): REMark resize screen to
11 lines for 2nd EDITOR

170 ALTKEY 'j',CHR$(240)&"jr"&CHR$(10): REMark Justify text right
180 ALTKEY 'k',CHR$(240)&"KM1,6;KC6,1"&CHR$(10): REMark Set Main Screen White
with Black Ink, Set Command screen opposite colors

190 ALTKEY 'l',CHR$(240)&"jl"&CHR$(10): REMark Justify text left
200 ALTKEY 'm',CHR$(240)&"SI1;SL1;SR80"&CHR$(10): REMark Set Margins Left
&Indent to 1, Right to 80

210 ALTKEY 'n',CHR$(240)&"bs"&CHR$(10): REMark Set Block Start
220 ALTKEY 'o',CHR$(240)&"be"&CHR$(10): REMark Set Block End
230 ALTKEY 'p',CHR$(240)&"pr"&CHR$(10): REMark Paragraph reform
240 ALTKEY 'r',CHR$(240)&"r.flp2_": REMark Read a file from flp2_
250 ALTKEY 's',CHR$(240)&"SH"&CHR$(10): REMark Activate Show Status Window
260 ALTKEY 't',CHR$(240)&"t"&CHR$(10): REMark Cursor to top of file
270 ALTKEY 'u',CHR$(240)&"bw.flp2_": REMark Write a block of text to flp2_
280 ALTKEY 'w',CHR$(240)&"w.flp2_": REMark Write a file to flp2_
290 ALTKEY 'z',CHR$(240)&"z"&CHR$(10): REMark Zap file
300 ALTKEY 'f',CHR$(240)&"rc.flp1_f_cmd"&CHR$(10): REMark Activate f_cmd
310 ALTKEY 'I',CHR$(240)&"BW.ser1"&CHR$(10): REMark Block Write current block to
printer
```

You can use the entire SuperBASIC listing if you wish or add to it, or customize it to suit your needs. Please understand that what I have written is 'not set in concrete', however, it works for me! Once you have developed your own ALTKEY file you should copy it to your printer so that you will know which character combinations do what - or a listing of the ALTKEY combinations can be added to the EDT_HELP files for immediate reference.

I have written about the importance of using the Editor HELP files many times during this series and now is the time to expand and customize the EDT_HELP files. The original HELP files are five full screens in length. My HELP files have nine screens which provide some command files listings, printer control characters and EPSON LQ-2500 and IBM Proprinter X24 printer codes of which I use most often.

To go about modifying or adding anything to the EDT_HELP file, first read in the EDT_HELP file into EDITOR. Save this file onto a blank disk before you attempt to modify the file and DO NOT OVERWRITE YOUR ORIGINAL EDT_HELP FILE on The EDITOR disk at this time!

EDITOR SE - (CONT'D)

Note that each line within this file has seven line numbers and each screen (page) begins with a successive digit. Page one uses '1', page two a '2' and so on. Not all line numbers are in order such as the first line of page one 1700010 and the second line begins with 1400000. Don't let this throw you off the track! Page down to screen five which provides a clue to what the different numbers accomplish.

Page five starts with 5000000; the second line, 5701040, provides white ink for the title of the page it is what I used for my additional four HELP pages. The third line sports 5400000. I changed this line to 5000000 without any problems. Line four starts with 5000000 and a numeral 1 is appended to the end of this line number. The numeral one in the eighth column defines a comment as number one and is displayed in red ink. The remainder of the lines numbers within the fifth page are all identical, 5000000.

To produce a sixth page of data, start off with the following:

```
6000000
6701040 Add your title for this page on this line
6400000
60000001 Your first line of HELP data
6000000
60000002 Your second line of HELP data;
```

and so on.....; however, do not exceed 24 lines in all for each additional page and you can add four additional pages to the original EDT_HELP if required.

When you have completed your new EDT_HELP file, save it to disk, remove your master file of The Editor with the original EDT_HELP file on it and replace it with the disk containing your new HELP file. Press F1 and page through the entire help file on the screen. If your new EDT_HELP file operates as you have intended, rename the original EDT_HELP on your master copy of The EDITOR with a different name or add an additional extension to it such as EDT_HELP_org. Org to indicate the original help file. Save the new EDT_HELP file to all of your copies of The Editor with the new EDT_HELP. Don't forget to rename all original EDT_HELP files with the _org extension.

To the right is a screen dump of page nine of my EDT_HELP file. There is an additional HELP screen which provides useful information for the Editor user which is instantly available when the command SH is given; Show Status. Show Status opens a window from the top of the screen displaying twelve lines of various system parameters. The window is normally a complementary color so as to distinguish between the normal text window and the Show Status screen.

```
9000000 Printer Translates - Epson LQ-2500 & IBM Proprinter X24 Printer Codes
9400000
9000000 7x^ Letter Quality On 7x^ Letter Quality OFF (Draft Mode)
9000000 7k^ Sans Serif Font
9000000 7k^ Courier Font
9000000 7k^ Prestige Font
9000000 7k^ Script Font
9000000 7k^ Bold PS Font
9000000 75 Italic Font ON 75 Italic Font OFF
9000000 7S^ Superscript ON 7I Superscript OFF
9000000 7SA Subscript ON 7T Subscript OFF
9000000 7P Pica Pitch 18 characters per inch
9000000 7M Elite Pitch 12 characters per inch
9000000 7g Micron Pitch 15 characters per inch
9000000 7D Compressed Pitch 17 characters per inch
9000000 7M^O Elite & Compressed 20 characters per inch
9000000 7PA Proportional Space ON 7P^ Proportional Space OFF
9000000 7E Emphasized Print ON 7F Emphasized Print OFF
9000000 7WA^ Double Height, Double Width printing ON
9000000 7W^ Double Height, Double Width printing OFF
9000000 7A Underlining ON 7 Underlining OFF
9000000 7A Alternate Character Set Graphic
9000000 7G Graphic Character Set 1
Line: 75 Col: 84 Line count: 232 Mode: Insert
```

The Show Status screen is a very useful tool for the EDITOR user, especially when preparing

EDITOR SE - (CONT'D)

```
Editing file: flp2_EDGE4
File type : Text
Margins: L: 1 Ind: 1 R: 80
Tab points : 4, 8, 20, 34, 64
Right just. : Yes Block Type: Line
Block start : 0= Undefined
Block end : 0= Undefined
Marker point: 0= Undefined
Last search : E/E/TRE#TR/?
Repl. string: /TRE#TR/?
Buffer sizes: 261114 46088
Buffer usage: 2% 1%

- Press any key to continue

& 249) to name a few. These characters are what I call 'Action keys'. When their control code combinations are entered from the keyboard, they will not write a character on to the screen, but instead, promote cursor movement. Some codes that will produce a graphics bar are CHR$(176, 177, 178, 205 and 223). Look up these codes in your QL manual under the Concepts Section for the Character number and their control code sequence, such as: CHR$(176) = CTRL-SHIFT-P. Learn to use the resources which are available to you; USE YOUR MANUALS and reap your rewards!

The labels I use for 5 1/4 inch diskettes are PRESS-a-ply data processing
8 Line: 99 Col: 22 Line count: 130 Mode: Insert
```

a long document which may be saved to disk a number of times. Often I access the Show Status screen to be sure of the name of the file I am working on. I usually change the TAB Interval a number of times when preparing charts or indenting lines. The SH screen provides necessary verification of TAB intervals. The additional information provided within this window is a welcomed sight when it is required such as Block information or a Find /Exchange string and Buffer usage.

Usually when I prepare to start any text file within EDITOR, I write a short Command line which will sit on the bottom line of the file. The command line will set the margin parameters, screen and command line colors and the type of justification required. To activate this command line, first set the cursor on the beginning of the command line, then depress F3, and enter EX, ENTER. The commands written on that line will automatically be activated.

S11 SL1 SR80 KM 1,4 KC 4,1 JR

The above line sets the margins for an 80 column display and provides a green screen with black ink and a black command line with green ink.

There are times that I prepare two similar command lines; the difference being a change for the screen and command line colors. This line is activated before preparing a screen dump as a white background with black characters provides better overall clarity when printed from a printer - not to mention that it sure is a lot easier on printer ribbons this way!

S11 SL1 SR80 KM 1,7 KC 7,1 JR

At this point, I thought it might be wise to discuss the various INK and PAPER color commands with reference to the main screen, the command line and the error line.

COMMAND LINE - The command KC 3,7 will display a white Command screen with red characters, whereas KC 5,1 will display a black Command screen with green characters. If, for instance you wish to change only the ink color, use the following sequence; KC 7, and the ink color will be changed to white on the original black Command screen.

ERROR SCREEN - The command sequence is KE 7,3 will display a red screen with white characters. If you wish to change, say, the screen color only, then use the following sequence: KE ,1 will change the Error screen color to black and the original ink remains white.

MAIN SCREEN - The command sequence is KM 1,5 and will display black characters on a green screen. As with the above two commands, altering either or both screen and ink colors use the same command sequences. NOTE: Any number within the range of 1 to 255 is valid, however, if you select screen or ink colors beyond 7, you may find that quite a few colors selected for ink will be difficult to read. When changing one color only, ink is the

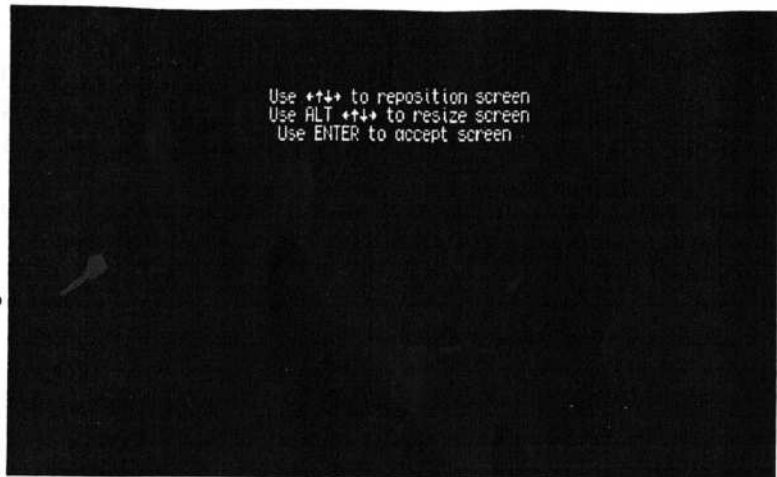
EDITOR SE - (CONT'D)

first number and the screen is the following number behind a comma. If you wish to change the screen color issue the appropriate two character command, hit the space bar once for a space, add a comma and then the screen number and ENTER. To change ink only issue the appropriate command enter the ink number, add a comma and then ENTER.

Two EDITOR programs on the same screen provides the user the ability to view two copies of a file simultaneously. I usually use this method when proof reading text; adding or deleting text within a file. Occasionally I drift off course! I can then read the original text on the second EDITOR to guide me back to my original direction.

The set-up for the second copy of EDITOR is quite simple, just CTRL-C out of EDITOR and EXEC flp1_EDT_BIN from SuperBASIC and the second EDITOR will load. The second EDITOR program will use all of the extension files from the first copy of EDITOR (EDT_HELP, EDT_charset and XTRAS) since they are already in the QL's memory.

When the second EDITOR appears on your monitor screen, activate the F9 Function key. A black screen appears with three lines of text and arrow characters. To resize the screen you must use the combination of ALT and a cursor key. To resize the screen for approximately half height, press ALT and move the UP cursor key eleven (11) times. The bottom of the screen will move upwards following the repeated use of ALT and the UP cursor key. If the screen position is not acceptable, move the screen about with the cursor keys and then press ENTER to accept the screen. You now have two EDITOR programs, one overlaying on top of the other.



The easy way of setting up a second EDITOR for eleven lines of text will be the use of the ALTKEY program listed at the beginning of the article. ALT-i will do it for you. QL users usually associate a database program with Psion ARCHIVE. ARCHIVE is a decent database program, however, my database requirements are rather limited so that I do not warrant the use of a large database program.

The EDITOR SE is always up and running whenever my QL is initialized, so I use the EDITOR as a database to store names, addresses and telephone numbers for me. EDITOR has a very fast search facility (Find) and when I

```
F/Gail/ bs be bh
```

Sample of NAT DBase			
NAMES	ADDRESS		TELEPHONE
Chowitz, Paul	R.G.C Travel Agcy 95 Delancy St; NY, NY 10002		212-677-929
DeLavechia, Larry	62 Jefferson Place, Massapequa, NY 11758		516-541-822
DiGiovanni, Joan	6 Wallingford Dr; Melville, NY 11747		516-427-036
Dul, Bob	15 Kilburn Court, Newport, RI 02840		401-849-386
Gail, Frank	Admiral, Massapequa, NY 11758		516-795-872
Gilder, George	67-38 188 St; Forest Hills, NY 11375		718-LI4-116
La Punzina, Joe	91 BAY 31st ST; B'klyn, NY 11214		718-373-582
Line: 4 Col: 84 Line count: 21 Mode: Insert			
Sample of NATLab DBase			
La Punzina, Joe	91 BAY 31st ST; B'klyn, NY 11214		718-373-5822
Molloy, Bob	412 Pacific St; Massapequa Park, NY 11762		516-541-6731
Line: 48 Col: 84 Line count: 80 Mode: Insert			

EDITOR SE - (CONT'D)

need a telephone number, for example, I load in my database file "NAT" (Name, Address, Telephone). The first line of this file has a short command sequence: F// bs be bh F - Find, // Empty string, bs - Block Start, be - Block End, bh - Block Hide. Please note that I do not show the block type command on the above line as LINE Block is my default block type.

Placing the cursor between both slash characters, I will enter a name or the first 3 or 4 characters of the Sir name. Then I depress the combination of ALT-Right Cursor which places the cursor at the end of the command line. Then I depress F3, enter EX on the command line and then depress ENTER. Within a split second the cursor finds the name I requested and Highlights the entire line with a name, address and telephone number.

A sample of the NAT Dbase

NAMES	ADDRESS	TELEPHONE
Delavechio, Larry,	62 Jefferson Place, Massapequa, NY 11758	516-541-8222
Dyl, Bob,	15 Kilburn Court, Newport, RI 02840	401-849-3805
Gail, Frank,	17 Admril Road, Massapequa, NY 11758	516-795-8727
Gilder, George,	67-38 108 St; Forest Hills, NY 11375	718-114-1106

Soon after I developed this simple system I realized that I required another database for printing out Name and Address labels from within EDITOR. I changed the format for storing the data from across the entire screen to four lines of text as illustrated below:

A sample of the NATlab DBase

F/Gil/ bs bh n; n; be

Robert Gilder
69 Jefferson Place,
Massapequa, NY 11758 USA
516-541-2271

The command sequence is basically the same as is used for the NAT file. However, I added n; n; between the bh and be command. Both N's move the cursor down two lines, illuminating the first three lines of text.

Printing the label requires the user to enter on the following command:

F3, BW.SER1, or if you have booted up the ALTKEY program, just depress ALT-[and the label will be printed out for you.

The Screen dump for Two EDITORs above show both database files with name, address and telephone number illuminated after a search.

Let's take a look at another task which The Editor can accomplish easily; writing and printing Diskette labels. The program listing for printing disk labels from within Editor is outlined below the SuperBASIC listing. Originally, all labels for my diskettes were printed from a SuperBASIC listing containing 26 lines of text and printer control codes. I knew there had to be a better and easier way for duplicating the printout using The Editor.

EDITOR SE - (CONT'D)

**The EDITOR
SPECIAL EDITION
DIGITAL PRECISION
FORMATTED @ 80 TRACKS, 2 SIDES
CAPACITY: 720 SECTORS
AUTHOR: CHARLES DILLON**

5.25 Inch Diskette Label

**The EDITOR
SPECIAL EDITION
DIGITAL PRECISION
FORMATTED @ 80 TRACKS, 2 SIDES
CAPACITY: 720 SECTORS
AUTHOR: CHARLES DILLON**

Updated:-----

3.5 Inch Diskette Label

100 REMark QLABS - Prints diskette labels using the PANASONIC KXP-1124 printer
101 REMark PRINT #3, CHR\$(27);CHR\$(64);:REMark Printer Reset
102 REMark PRINT #3, CHR\$(27);CHR\$(120);CHR\$(1);:REMark Letter Quality mode,
substitute double strike if no LQ

105 FOR a =1 TO 1: REMark Change loop number for printing more than 1 label
110 OPEN #3, ser1
111 PRINT #3, CHR\$(27);CHR\$(64);:REMark Printer Reset
112 PRINT #3, CHR\$(27);CHR\$(120);CHR\$(1);:REMark Letter Quality mode, substitute
double strike if no LQ

120 PRINT #3, CHR\$(27); CHR\$(116);CHR\$(1);:REMark select Alternate Character set 1
125 PRINT #3, CHR\$(27);CHR\$(55);:REMark Select Graphic Character Set 1
130 FOR i=1 TO 38
140 PRINT #3, CHR\$(223);: REMark Graphic Character - BAR
150 END FOR i
160 PRINT #3, CHR\$(27);CHR\$(87);CHR\$(1);: REMark Double width printing
180 PRINT #3, \ " LIST LIBRARY"\
190 PRINT #3, " ASSORTED PROGRAMS"\
200 PRINT #3, " NUMBER 1"\
210 PRINT #3, CHR\$(27);CHR\$(87);CHR\$(0);:REMark Double width OFF
220 PRINT #3, " FORMATTED @ 40 TRACKS, 2 SIDES"\
230 PRINT #3, " CAPACITY: 720 SECTORS:"\
240 PRINT #3, " PROPERTY of LIST GROUP"
250 REMark PRINT #3, CHR\$(27); CHR\$(60): REMark Home printer head
260 FOR i=1 TO 38
270 PRINT #3, CHR\$(223);: REMark Graphic Character - BAR
280 NEXT i
330 PRINT #3,CHR\$(10); CHR\$(10); :REMark 2 spaces for start of next label
340 NEXT a

Now for the short version:

If you count the lines within the above listing, you will see that we have cut down the line count by two-thirds and this listing will exactly duplicate the printer output from the

EDITOR SE - (CONT'D)

SuperBASIC program. To activate label printing, enter the following from the Command line: W.SER1 (or SER2 if that is your printer port) and The printer will swiftly print out a label.

Line 1: ESC SHIFT-2 Printer Reset, ESC x CTRL-A, Letter Quality ON, ESC t CTRL-A Select Alternate Character set, ESC 7, Select Graphic Character set 1.

Line 2: CTRL-SHIFT-ALT-DOWN CURSOR, Inverse Bar printed 38 times.

Line 3: ESC W CTRL-A, Double Wide Text ON

Line 4: ESC W CTRL-f, Double Wide Text OFF

Line 5, 6 & 7: Add text

Line 7: CTRL-SHIFT-ALT-DOWN CURSOR, Inverse Bar printed 38 times. END of File.

If your printer has additional fonts, such as, Sans Serif, Courier, Prestige, Script, Bold PS or even Italics, they can be added after the printer control code sequence of Letter Quality ON on Line 1 above. Bold or Double Strike printer control codes can be added to any line(s) of text for striking results.

You will not be able to access all of the graphic characters within The Editor environment, as some of the graphic character codes such as, CHR\$(196, 224, 240 & 249) to name a few. These characters are what I call 'Action keys'. When their control code combinations are entered from the keyboard, they will not write a character on to the screen, but instead, promote cursor movement. Some codes that will produce a graphics bar are CHR\$(176, 177, 178, 205 and 223). Look up these codes in your QL manual under the Concepts Section for the Character number and their control code sequence, such as: CHR\$(176) = CTRL-SHIFT-P. Learn to use the resources which are available to you; USE YOUR MANUALS and reap your rewards!

A single modification can be made to the above listing for use with 3 1/2 inch diskettes. On line one of the label program, add ESC g (Micron Pitch) after the first printer control sequence (ESC SHIFT-2).

Line 1: ESC SHIFT-2 Printer Reset, ESC g, Micron Pitch, ESC x CTRL-A, Letter Quality ON, ESC t CTRL-A Select Alternate Character set, ESC 7, Select Graphic Character set 1. Remark: For 3.5 inch Diskette Labels.

Note that a 3.5 inch diskette label can accept more lines of text than a 5 1/4 inch diskette label can hold. Ten lines of text can be inserted between the graphic bars.

Now that I have caught your attention regarding the use of the printer's graphic character set, it is time that we explore the graphic character sets more closely and see what else can we extract from it!

Most modern printers using EPSON and IBM emulation will normally have two graphic sets for each emulation mode. EPSON graphic character set 1 differs slightly from graphic character set 2. Both IBM Graphic character sets, 1 and 2 respectively, seem to be close to being identical. Why in this world should we bother using a graphic set anyway?

One use for the Graphic character set we have already mentioned for printing a diskette label with two graphic bars across the top and bottom of the label. Actually, we really do not need to use graphics to produce a good media label, unless we want our diskette labels to be different from most other labels. Please note that after the first graphic bar was

EDITOR SE - (CONT'D)

printed, text followed; some in double width and in bold print. The point I am trying to make here is that all the necessary ASCII character codes we use for printing text is nested within a graphic character set including the codes for carriage return, top of form, line feed and so on. However, if you require italics, you would have to switch back to the standard character set.

We used Graphic character set 1 to produce a graphic bar. If we change the code from Graphic character set 1 to set 2, we will be able to print a whole lot of other characters that would be nice to print out, such as a one character 1/2 or 1/4, the US cent character, the Greek character for PI and more. For those users of the EDITOR following this series might recall the command line I displayed to produce the £ character (this is displayed in the Show Status Screen Dump). Graphic character set 2 has a £ character within its table, ASCII 156. If you open your QL manual to the concepts section where the entire QL character set is displayed and with the combination of keypresses required to access code decimal 156. It is CTRL-SHIFT-, and it will produce a B with a tail. As for the printer, it will print out the £ character.

If you would like to print out 1/2 character, ASCII 171, the key press combinations are CTRL-SHIFT-K; to print out 1/4 character, ASCII 172, key press CTRL-SHIFT-L. You will have to thumb through your printer manual for the graphic tables and try out the keypress combinations which respond to their ASCII codes. If some of the characters you would like to use in a file which do not respond to combinations of keypresses as the concepts section of the QL dictates, do not despair!

On page 125 of The EDITOR manual you will find a SuperBASIC listing of a simple printer driver, which will allow the user to very easily set up printer translates. Do not confuse setting up translates for The EDITOR as you have written in the past with Quill. This procedure is simple and foolproof. Below is a partial listing of the translate portion of the Simple Printer Driver:

```
1200 IF changed(CHR$(24), CHR$(219)) : RETURN wk$
1210 REMark CTRL/X to CHR$(219) = Graphic full space bar
1220 IF changed(CHR$(25), CHR$(234)) : RETURN wk$
1230 REMark CTRL/Y to CHR$(234) = OHM character
1240 REMark any other changes are entered here
1250 IF changed(CHR$(26), CHR$(155)) : RETURN wk$
1260 REMark CTRL/Z to CHR$(155) = US Cent Character
1270 IF changed(CHR$(22), CHR$(227)) : RETURN wk$
1280 REMark CTRL/V to CHR$(227) = PI Character
1290 IF changed(CHR$(21), CHR$(241)) : RETURN wk$
1300 REMark CTRL/U to CHR$(241) = +/- Character
1310 IF changed(CHR$(23), CHR$(156)) : RETURN wk$
1320 REMark CTRL/W to CHR$(156) = UK Pound Character
```

The last translate shown will print out the £ character when the combination of CTRL-W is pressed at the location in your text for the £ character. Actually, you do not need this translate, as I have indicated above, the combination of 'CTRL_SHIFT-, ' will also print out this character.

Please, do not get carried away by adding CTRL characters within your text. When your text is completed and spell checked, save it to your media and add an extension such as _txt. Now you can add any printer CTRL characters to your text file that you wish and when you have completed this task, save this file with a different extension which will indicate printer CTRL characters have been added.

EDITOR SE - (CONT'D)

When adding control characters in your completed file, use a Find string to locate the character you require to replace - or you can prepare a simple Exchange string that will do that particular job for you, such as:

```
JL RP E/£/CTRL-SHIFT-,/
```

JL justify left so that the line stays rigid, RP repeat this cmd file, E exchange the £ character for the combination of CTRL_SHIFT-, this short file will change all occurrences of the £ character to the translate.

Also, you should prepare a chart of all translates which reside in the Simple Printer driver program and those you add directly. This chart could reside in the EDT_HELP file providing instant access to the codes.

If you cannot find your printer manual for looking up the graphic tables for your printer, then type in the SuperBASIC listing below and run it. If you have a graphics character set, it should print the graphic characters out.

```
100 OPEN #3, ser1 :REMark Open Channel #3 and assign ser1 as output
110 PRINT #3, CHR$(27); CHR$(120); CHR$(1); :REMark Select Letter Quality
120 PRINT #3, CHR$(27); CHR$(116); CHR$(1); :REMark Select Alternate Characterset
130 PRINT #3, CHR$(27); CHR$(54); :REMark Select Graphic Characterset #2;
140 REMark Graphics Set 1 change CHR$(54) for CHR$(55)
150 FOR i = 32 TO 255 :REMark Loop for Graphic Characters 32 through 255
160 REMark If the printer balks at printing the last 10 characters, change 255 to 265, it should
force printing.

170 PRINT #3, CHR$(i); " "; :REMark Print each Graphic Character with one space between
each character

180 NEXT i :REMark End Loop
190 CLOSE #3 : REMark Close Channel #3
```

Note the REM statement on line 160. My printer will not print out the entire Graphics character set with CHR\$(255), so I have had to add 10 to that number which does the job for me. Also, It seems that my printer doesn't like too many REM statements for this application. If the program does not produce any character output, remove the REM statements! The printer control codes for the 2nd Graphics characterset is ESC 54, whereas the 1st set is ESC 55. Also note that on line 170 I have added an empty string which provides a one space separation between all of the graphic characters. You can delete the empty string if you do not mind if each character is connected to each other.

A short Note about writing SuperBASIC programs in The EDITOR. Set the right margin to at least 150 characters as SuperBASIC does not like SuperBASIC lines broken before hand. Also, when typing in Keywords, make certain that they are typed in correctly. If they are not, SuperBASIC will stop the program from running and add the word 'MISTAKE' after the line number.

Before signing off, there are two commands which I use within my text files just prior to printing out a draft copy of my file, MD, Make Document and PPI, Set document lines.

EDITOR SE - (CONT'D)

PPL - is used to set the number of lines in a document page (the term document is not to be compared to a doc file), I enter PPL 66. Then I will enter MD which provides a 'soft' page break that will identify the end of each page. The soft page break will not provide a skip perforation command!

MD - When the MD command is activated, it scans the current text file and converts it to a document file. The number of words are tallied and page breaks are computed. The page length used for computing page breaks is determined by the figure used with the PPL command.

The file word count can be observed when the SH command is given. The second line in the Show Status window will display the following:

```
File type: Doc. PPL 66 Words: 4987
```

The page break is identified by a full line of '/-/' characters. Page 84 of the EDITOR manual provides a full page of text detailing this command. The command line will now display the current page number.

I would like to offer thanks to Charles Dillon for developing the EDITOR. I find my self marveling at his ability to write such a superb program; and to Fred Vaccia and the Digital Precision team for their continuous support by providing upgrades for this outstanding program.

To Bob Dyl, publisher of IQLR, a special thanks for allowing me to 'sound off' about The EDITOR SE. And last but not least, the readers of IQLR who responded positively to this series. It is gratifying to know that someone 'out there' reads what some of us have written!

From time-to-time I will prepare additional material on the subject of The EDITOR and I would like to correspond with other users of the EDITOR. If any IQLR Subscriber and EDITOR user would like any of the series documentation on disk, I would be more than happy to respond to their request. Just send a formatted 720K disk with return postage to my address and it will be sent out immediately. Bob Gilder, 69 Jefferson Place, Massapequa, NY 11758 USA.

QUILL - DESKJET 500

Trafford, Alabama, USA - Bob Madaris

This is a follow up on printing with the DESKJET 500 printer from the last issue of IQLR. This time we are dealing with printing of QUILL (QLWP) documents. This is accomplished by using INSTALL_BAS to create a PRINTER_dat file for the DESKJET 500 printer. All of the features of this printer will be available for printing QUILL docs. The following assumes that all mode switches on the printer are down.

Run the PSION Install_bas program, use down arrow key to OTHER, then press F2 to edit the driver. Edit the driver as follows:

QUILL - DESKJET 500 - (CONT'D)

DRIVER NAME	: DJ_QUILL	REMark: Name it what you want to.
PORT	: ser1	REMark: or what port you use
BAUD RATE	: 9600	
PARITY	: NONE	
LINES/PAGE	: 60	REMark: 63 if perforation skip off
CHARACTERS/LINE	: 80	REMark: See text
CONTINUOUS FORMS	: NO	
END OF LINE CODE	: CR,LF	
PREAMBLE CODE	: ESC,E,ESC,(,s,2,Q	REMark: Reset & select letter quality
POSTAMBLE CODE	: ESC,E	REMark: Reset printer
BOLD ON	: ESC,(,s,3,B	
BOLD OFF	: ESC,(,s,0,B	
UNDERLINE ON	: ESC,&,d,D	
UNDERLINE OFF	: ESC,&,d,@	
SUBSCRIPT ON	: ESC,(,s,-,U	
SUBSCRIPT OFF	: ESC,(,s,0,U	
SUPERSCRIP ON	: ESC,(,s,+,U	
SUPERSCRIP OFF	: ESC,(,s,0,U	
TRANSLATE1	: £,ESC,(,1,E,#,ESC,(,0,N	REMark: Prints the British Pound
TRANSLATE2	: Ö,ESC	

Notes on the above: Attention must be given to upper case and lower case letters as they appear above. It is easy to confuse some letters and numbers as printed by some printers. It is important to get them right in the print driver. This is an upper case O . This is the the number 0 . This is an upper case letter I . This is the number 1. The first character in TRANSLATE2 is CTRL SHIFT E. More on this later.

Install the print driver by following the prompts on INSTALL_bas screen. We can now use it to print from Quill (QLwp). [Xchange users follow your procedure to produce Xchange_dat]

Using this print driver we can now use Quill's features such as: B(old), U(nderline), H(ighscript), L(owscript) to print to the DESKJET 500. Note: The Subscript and Superscript commands were not in my DESKJET owners manual. They were in the Tech Reference Guide sold separately.

TRANSLATE2: As the Psion printer drivers do not permit control code 27 (ESC) to be imbedded in the Quill document and passed to the printer, we have set up TRANSLATE2. We can imbed Ö (CTRL SHIFT E) in our document so the ESCape sequence can be sent to the printer. [if you use CTRL SHIFT E for other purposes, change to suit when you edit the driver]. *Use F3, D(esign) Command in Quill to set the lines per page and the characters per line to the above settings of the print driver.*

By setting the continuous forms to no in the print driver causes Quill to prompt "NEW SHEET OF PAPER AND PRESS ENTER" after each page is printed. If wanted you can put this sheet back in the printer (printed side up) and print the other side. This saves a lot of paper . Sure it slows you down, but this is a trade off for you to make. I have a 72 page document waiting to be printed. I like to print the info docs that come with most software on both sides and put it in booklet form. It makes easier reading.

We can use TRANSLATE2 to send any of this printer's command set to it. We just type Ö for ESC and then the rest of the printer command. Some examples:

QUILL - DESKJET 500 - (CONT'D)

Õ(s0p5h12v0s3b3T would cause the printer to print the characters of text that followed it in the document to be printed with 5 Pitch 12 Point Bold characters. This is nice when you want a reference, etc. in larger characters. As Quill is not a wysiwyg processor you will not see this on the QL screen. Õ(1E would select the United Kingdom (ISO 4) Character set .

You could imbed commands to use the proportional fonts or even landscape (sideways) printing. The lines per page and characters per line would have to be adjusted in the print driver and also Design in Quill. Some experimenting with the printed page has to be done when using condensed, double wide, or proportional fonts in the Quill documents. We Quill users are used to this. [Yes, I have Text87plus4, but I still use Quill as much as it. This document was written withText87plus4].

As shown in the examples there is no limit, of the features of this printer, that you can send by using Õ followed by the printer command you want. Look them up in the owners manual or Tech Reference Guide and imbed them in your document.

If you have any questions on the above article, please send a SASE. I would be glad to help. I am also available by phone from 6 to 10 PM CDT weekdays. 205-681-5751 - Robert C. Madaris - 41 Doty Drive, Trafford, AL 35172 USA.

Cueshell

The desktop program for all QDOS compatible systems

Cueshell is a graphically oriented desktop program, that is the program options are presented on the screen and the user has only to point at the option, normally with the mouse, to initiate the desired operation.

In practise this for instance means that to copy a file, the file is marked and then the target is simply pointed to. The destination (or a part of it) must simply be visible.

Cueshell is based on the Pointer Environment, a system extension which implements mouse pointer, menu structures and Hotkeys. The Pointer Environment comes with Cueshell.

Cueshell is intended to offer easy access to all everyday tasks on the computer. Cueshell is very fast, as it is completely written in Assembler, and runs on every extended QL.

Cueshell is the first choice desktop program for all systems with built in level 2 device drivers:
• flp level2 • Gold Card • QXL • Atari emulators including QVME •

Being a graphically controlled program, Cueshell offers features not available to QDOS until now:

- Dynamic catalogue window control • Up to 16 catalogue windows can be open •
- Object oriented file management, e.g. copying complete directory trees • Easy file rename (just type new name) •
- The form (position, size and sort order) of a catalogue window, can be saved and restored for any directory separately •
 - Additional file attribute control, write protect and invisible • User friendly configuration from within the program •
- Very comfortable view window with option to make _doc files easily readable and scrolling files forward and backward •

Cueshell costs DM 100.00 (£ 40.00) and is available from Dilwyn Jones Computing, Jochen Merz Software or directly from us (eurocheques only)

Albin Hessler Software • Im Zeilfeld 25 • D-72631 Aichtal • Tel+Fax 07127-56280

LIGHTNING SPECIAL EDITION

If you are using a QL in any shape or form or with any accessory (including the new Super Gold Card, QXL, Gold Card, Trump Card, ST/QL, Thor, PC CONQUEROR, Minerva, TURBO, and even the humble unexpanded microdrive-only QL), you really should be using LIGHTNING SPECIAL EDITION. If not, you are very severely and unnecessarily (the program is cheap) slugging your system's performance. The superb LIGHTNING SPECIAL EDITION is capable of both automatically and very significantly accelerating almost every aspect of QL operation - whatever it is you use the QL for. *"More than 10x is achievable and 2x-4x is typical"* (quoted from page 24 of review in April '90 QL World). The speedup ratio is virtually independent of the system. However fast or slow is your QL hardware, LIGHTNING SPECIAL EDITION will accelerate it much further. All recent versions of our software are carefully optimised for 16/32-bit processors, without compromising 8-bit working. The program has not got any adverse side effects at all, and it fixes certain malevolent (i.e. lock-up or corruption inducing) anomalies. Installing it is a fast, once-only operation that takes two or three minutes and which assumes & requires absolutely no knowledge of programming or of anything even remotely technical about the QL: you are simply asked whether you wish to speed up text, maths and graphics individually, or everything. Unless you have a very good reason, opt for everything! Then LIGHTNING SPECIAL EDITION copies itself onto your boot-up disks, instantly modifying their BOOT files. Now every time you start up, full throughput acceleration is automatically invoked and everything goes much smoother and faster. In case you think that this is too good to be true, we quote verbatim the concluding para of the Sinclair QL World review: *"I could not fault Lightning Special Edition on anything. It is a clear winner and a best buy at £49.95"*. The program includes a bundle of accessories (e.g. change screen attributes including character sizes, colours and fonts in other programs - even in Quill, smooth scrolling and much more) and tweaks (vary maths and/or graphics precision, a null device, a drain and much more). Stop reading the manual where we tell you to - at around page four - if simple use is all that you want. The program also includes 84 excellent small fonts for use with PERFECTION SPECIAL

EDITION, PROFESSIONAL PUBLISHER and other programs - a real bonus!

LIGHTNING SPECIAL EDITION includes both a ROM (for plugging in at the back of your QL - no screwdriver needed) and a disk (or cartridge, if that is what you specified). As some QL hardware (QXL; either Gold Card for speed reasons) is not ROM-efficient, or you might have something already plugged in (ICE, TK2 if not already on your disk interface), you should opt for the version of the program minus the ROM for just £39.95: this is the GOLD CARD VERSION. If you have two QLs, say one of them a QXL / (Super) Gold Card and one "ordinary", you should go for the full LIGHTNING SPECIAL EDITION, as you can use the ROM on the second machine. Extra ROMs cost £10 if ordered at the same time as the program, else £15.

Q1) What programs benefit from LIGHTNING SPECIAL EDITION (LNGSE), and how much? A1) All programs, including PC emulators, benefit. Perhaps our PERFECTION SPECIAL EDITION benefits most. Interestingly, the more competently an application is implemented, the greater its expected acceleration from LNGSE..... This is because all good programs contain very fast-working code: their only bottleneck is the QL ROM, in which they may end up spending a proportionately large amount of time. LNGSE cures the congestion. Q2) Why didn't DP build LNGSE into all its programs? A2) It would be very inefficient to do it that way: because of multitasking, you'd pay for the RAM-space over and over again, let alone all the wasted disk space. Also, LNGSE benefits all programs, not just our ones. Q3) Does the QL "know" it is running LNGSE? A3) No, and there is no operating overhead either. And the QL isn't "running" LNGSE in any sense of the word. In its first and only tenth of a second of life, LNGSE pages out, using a door deliberately left open by the QL's forward-thinking designer, large chunks of QDOS (AH, JM, JS, MG and all Minerva operating system variants) and replaces them with our fine-tuned supercode. The door was carefully designed so that even the most errant programmer would not abuse it. After that, the QL has no way of knowing it has been "taken over". Q4) I'm concerned about compatibility. While I've heard only good reports about LNGSE, I've read about other products being involved in conflicts with application programs. A4) Firstly, LNGSE is not a replacement for the

whole of the ROM, only for some parts. We have, therefore, not had to make ad hoc changes to any of the many good bits, in order to avoid copyright problems. As explained in 3), we are in fact using a route specifically designed into the QL to enable ROM code to be efficiently patched. Secondly, we are very pragmatic about "improvements" and bug-fixes: one man's bug is another man's feature. Of course the original ROMs had faults - but most of these are benign and well-known (DP can supply an official bug-list to customers). To fix most such bugs would be unwise, as a lot of existing software probably either takes some advantage of, or side-steps, them. If you fix the bugs, some of this software is liable to fail, perhaps in subtle ways (all the more dangerous). It is quite unproductive apportioning blame in such cases - it is irrelevant whose fault it is: if the end-user gets software problems, it is simply VERY BAD NEWS for everyone. LNGSE avoids these pitfalls by accurately emulating all harmless QL anomalies (much harder than fixing them - we have to foresee all outcomes of the oddities). To give but one example, the QL's line-drawing routine often draws lines the wrong length (>1 pixel out). LNGSE could easily fix this (in fact, LNGSE provides a software switch to opt for correcting) but we default to emulating this anomalous behaviour. If we did not, many grid-drawing programs would end up producing odd-looking results, as their authors have understandably had to set line lengths "wrong" in order to get the right length on-screen. Consequently, LNGSE is - yes - fully compatible with everything. Q5) Is LNGSE a compiler? A5) No - TURBO is. Naturally, LNGSE greatly improves the performance of compiled programs, and by a better than multiplicative ratio (the reason for this mathematical effect is given at the back of the LNGSE manual). As most commercial software is compiled, you are the beneficiary! Q6) Why is LNGSE so cheap? A6) The truth is, we know that once you have experienced LIGHTNING SPECIAL EDITION, you won't abandon your QL. As THE QL software publisher, that is rather good news for us. Q7) One more reason for buying LNGSE? A7) Look at our SPECIAL DEALS, and think. SPECIAL DEALS can allow you to get additional programs for free, even to get us pay you to buy them! Hint: Combine cheap and dearer programs.

BUY LIGHTNING SPECIAL EDITION NOW!

DIGITAL PRECISION PRICES

	£
3-D PRECISION CAD SYSTEM	49.95 d
ADVENTURE CREATION TOOL SPECIAL EDITION	49.95 r
ARCADIA GAME	9.95 s
ARCHIVE DEVELOPMENT SYS + RUN-TIME MODULE	29.95 a
ARCHIVE TUTORIAL	19.95 a
BETTER BASIC EXPERT SYSTEM	24.95 a
BLOCKLANDS GAME	9.95 s
CASH TRADER v3.3 + ANALYSER	99.95 c
COMPARE FILE UTILITY	19.95 a
COPY UTILITY FOR BACKING UP	9.95 a
CPORT BASIC TO C AUTO-TRANSLATOR WITH C68 COMPILER	99.95 c
CPORT BASIC TO C AUTO-TRANSLATOR	89.95 c
DATABASE ANALYSER FOR ARCHIVE	19.95 a
DAT-APPOINT APPOINTMENT DATABASE SYSTEM	19.95 d
DESKJET/LASERJET DRIVER FOR PRO PUBLISHER	39.95 c
DESKTOP PUBLISHER SPECIAL EDITION	24.95 d
DESKTOP PUBLISHER	29.95 a
DIGITAL C COMPILER	49.95 a
DIGITAL C SPECIAL EDITION	19.95 b
DISKTOOL WITH QUICKDISK	9.95 a
DROIDZONE GAME	89.95 r
DR-DOS v7 STATE OF THE ART PC OPERATING SYSTEM	49.95 d
EDITOR SPECIAL EDITION	29.95 a
EDITOR	39.95 a
EYE-Q GRAPHICS SYSTEM	19.95 r
FONT ENLARGER	29.95 a
GAMES COMPENDIUM (ALL FIVE GAMES)	14.95 r
GRAFIX 24-PIN UNIVERSAL PRINTER DRIVER	49.95 c
HARDBACK + FINDER HARD DISK MANAGER	24.95 a
IDIS INTELLIGENT DISASSEMBLER	39.95 d
IDIS SPECIAL EDITION	24.95 a
LIGHTNING ACCELERATOR	49.95 h
LIGHTNING SPECIAL EDITION ACCELERATOR	39.95 a
LIGHTNING GOLD SPECIAL EDITION	19.95 a
MAILMERGE DATABASE SYSTEM	49.95 d
MEDIA MANAGER SPECIAL EDITION	24.95 a
MEDIA MANAGER	29.95 g
MEGA DICTIONARY	39.95 d
MICROBRIDGE	19.95 d
NAMES AND ADDRESSES DATABASE SYSTEM	49.95 c
PAYROLL SYSTEM	179.95 g
PC CONQUEROR GOLD SPECIAL EDITION WITH DR-DOS v7	99.95 g
PC CONQUEROR GOLD SPECIAL EDITION	139.95 r
PC CONQUEROR WITH DR-DOS v7	59.95 r
PC CONQUEROR	19.95 a
PEDIT PRINTER DRIVER FOR XCHANGE	139.95 c
PERFECTION PLUS SPECIAL EDITION WITH SPELLCHECKER	99.95 r
PERFECTION PLUS WITH SPELLCHECKER	99.95 c
PERFECTION SPECIAL EDITION WORD PROCESSOR v5	19.95 c
PERFECTION SPECIAL EDITION DEMO VERSION + SAMPLE DATA	59.95 d
PERFECTION WORD PROCESSOR v3	29.95 a
PERFECT POINTER TOOLS	69.95 a
PROFESSIONAL ASTROLOGER WITH ASTRONOMER	59.95 a
PROFESSIONAL ASTROLOGER	29.95 s
PROFESSIONAL ASTRONOMER	49.95 r
PROFESSIONAL PUBLISHER TOOLBOXES (BOTH PARTS)	29.95 r
PROFESSIONAL PUBLISHER TOOLBOX PART ONE	29.95 r
PROFESSIONAL PUBLISHER TOOLBOX PART TWO	89.95 c
PROFESSIONAL PUBLISHER	29.95 a
QLICK CARD INDEX SYSTEM	24.95 a
QUICK FRONT END SYSTEM	69.95 c
QMATHS MATHEMATICAL SYSTEM PART ONE	59.95 c
QMATHS MATHEMATICAL SYSTEM PART TWO	99.95 c
QMATHS MATHEMATICAL SYSTEM (BOTH PARTS)	39.95 a
QMON MACHINE CODE MONITOR	19.95 c
QUICKLASER PUBLISHER DRIVER FOR LASERJET/DESKJET PRINTERS	19.95 a
RECOVER ARCHIVE UTILITY	9.95 s
REVERSI GAME	19.95 a
SEDT + SCREENPRINT ARCHIVE UTILITIES	109.95 r
SOLUTION PC EMULATOR WITH DR-DOS v7	29.95 r
SOLUTION PC EMULATOR	49.95 d
SPELLCHECKER WITH DICTIONARIES	49.95 b
SUCCESS CP/M EMULATOR	24.95 a
SUPERBASIC MONITOR	39.95 a
SUPERFORTH COMPILER WITH REVERSI	24.95 s
SUPER ASTROLOGER	9.95 s
SUPER BACKGAMMON GAME	29.95 a
SUPER SPRITE GENERATOR	49.95 h
TOOLKIT III WITH ROM	29.95 a
TOOLKIT III	29.95 b
TRANSFER UTILITY SPECIAL EDITION	29.95 a
XREF SUPERBASIC PROGRAM ANALYSER	9.95 b
TRANSFER UTILITY	79.95 a
TURBO BASIC COMPILER + TOOLKIT	19.95 a
ULTRAPRINT SCREEN DUMP UTILITY	29.95 a
XREF SUPERBASIC PROGRAM ANALYSER	29.95 a

KEY a=Available either on cartridge or disk; b=Disk only; c=Minimum 512K exp: disk only; d=Minimum 256K exp: either cartridge or disk; r=Minimum 256K exp: disk only; s=Cartridge only; g=Minimum 1.5Mb RAM: disk only disk; h=ROM + (cartridge or disk)

AND NOW - BEST-EVER SPECIAL DEALS...

5% off 2 programs
 10% off 3 programs
 20% off 4 programs
 30% off 5 programs
 40% off 6+ programs!

SUPER GOLD CARD

This amazing product is the way forward for the QL. Like Gold Card before it, the brand-new Super Gold Card is a plug-in disk interface and RAM expansion that works on all QL versions. Incredibly, it is over three times speedier than Gold Card, with over twice the RAM and with many enhancements. It complements LIGHTNING SPECIAL EDITION like nothing else, squeezes the best out of TURBO (which was designed with 32-bit CPUs in mind) and really accelerates PC CONQUEROR. Super Gold Card is actually as fast, or slightly faster, than the much vaunted QXL; also, it is 100% QL-compatible now, and no PC is needed. The table below really says it all:

System →	Bare QL	TRUMP CARD I	GOLD CARD	SUPER GOLD CARD
↓ Features				
Relative Speed	1x	1.8x	7x	25x!
Motorola CPU	68008	68008	68000	M68020
Clock Frequency	7.5MHz	7.5MHz	16MHz	24MHz
Bus width	8 bit	8 bit	16 bit	32 bit
RAM fitted	128Kb	896Kb	1,920Kb	3,968Kb
RAM access speed	Slow	OK	Fast	Twice as fast
PCB population	V.high	High	V.low	V.low
Physical dimensions	Monolith	Full-size	Half-size	Half-size
Lock-up frequency	Ouch!	Occasional	V.rare	Won't
Battery Backup Clock	No	No	Yes	Yes
Clock Protection level	N/A	N/A	Modest	High
Toolkit II + Manual	No	Yes (early vns)	Yes	Enlarged
Sub-directory support	No	No	Yes	Yes
Parallel/Centronics port	No	No	No	Yes
Spooler/ScreenDump/Ramdisks	No	Yes	Yes	Yes
Speedup switch (Screen#2)	No	No	No	Yes
Future hi-res graphics	No	No	No	Planned
Disk drives supported	N/A	SD/DD	SD/DD/HD/ED	SD/DD/HD/ED
Max no: of disk drives	0	2	3	4
Max sectors/disk	N/A	1,440	6,400	6,400
Max disk transfer rate	N/A	30Kb/sec	120Kb/sec	>120Kb/sec
Peripheral card tolerance	OK	No	No	OK
SCSI-2 compatibility to-be	No	?	No	Yes
Miracle/DP Warranty	No	No	2 years	2 years
DIY/Kit incorporability	Yes	No	No	Yes
Overall Rating by DP	2%	10%	30%	110%

And to the Very Best news: from DP, SUPER GOLD comes SUPER CHEAP! SUPER GOLD CARD, plus a no-limit extra 20% SOFTWARE DP DISCOUNT VOUCHER, plus a FREE mystery DP program, plus a FREE Dust Cover, will cost you a mere £375 ✓✓✓✓ Less £125 if part-exchanging your standard 2Mb Gold Card Add £125 for ED 6400-sector Disk Drive (PSU, cased, cables).

OTHER HARDWARE EXCHANGED AND SOLD BY ARRANGEMENT. PLEASE ORDER NOW: WE EXPECT VERY HIGH DEMAND FOR SUPER GOLD CARDS, AND WE DON'T WISH TO DISAPPOINT. INTERNATIONAL RAM PRICES ARE UNSTABLE AND PRICE HIKES MAY BE INEVITABLE. CONSEQUENTLY, THE ABOVE COMBINATION OFFER COULD BE WITHDRAWN WITHOUT NOTICE...

The software discount must be taken at the same time as the main order, and CAN be combined with the SPECIAL DEALS discounts. For example, if you chose six DP programs of total list price £100, you would only have to pay £100 - 40% - 20% = £48 for them! And, of course, you would also get the two gifts absolutely free, and a 4Mb SUPER GOLD CARD too!

TERMS & CONDITIONS * We accept payment by VISA, Mastercard, Access, Eurocard, Eurocheque, £ cheque drawn on a UK branch of any bank or building society, postal order, cash, travellers cheques or direct funds transfer to our bank account #60327808 at Barclays Bank plc, South Chingford Branch (sort code 20-53-00), NE London Business Centre, PO Box 2403, London N18 2BY. If you must use another currency, add 7.5%. If you must use another form of cheque, add 1.5%. * Upgrades cost only the difference in current price plus £10; return the original disk and manual, but do NOT return the manual if the upgrade is to a "SPECIAL EDITION" of your original program; you will be sent useful supplementary documentation. Upgrades from LIGHTNING are the exceptions to the last rule! * Only DP programs and upgrades (i.e. not DR-DOS) count towards discounts. * Prices are all-inclusive for UK mail-order. Rest of Europe, add 5%. Elsewhere, add 10% (Air Mail). * We aim for 24 hour turnaround. * DP & Digital Precision are trading names of Digital Precision Ltd, Company No. 1833989, registered in England & Wales. * Orders using your own paper are also welcomed

Post to: DIGITAL PRECISION, 222 The Avenue, London E4 9SE, UK or phone on 081-527 5493 from UK, +44 81-527 5493 rest of the world

Name: _____ Address: _____

Products ordered: _____

on mdv/3.5"disk/5.25"disk* (no. of sectors on disk-format = 360/720/1440/2880/6400*; if 5.25"/720, specify 40/80* track) **delete as needed.

Signature: _____ Amount: £ _____

Card No: _____ Expiry date: _____

QUANTA



Independent QL Users Group

Worldwide Membership is by subscription only, and offers the following benefits:

Monthly Newsletter - up to 40 pages

Massive Software Library - All Free !

Free Helpline and Workshops

Regional Sub-Groups. One near you?

Advice on Software and Hardware problems

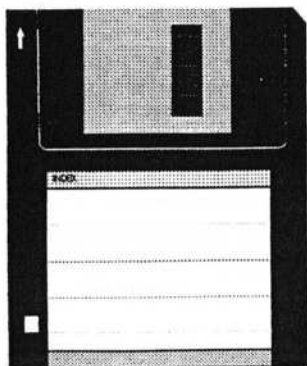
Subscription just £14 for UK members

Overseas subscription £17

Barclaycard: Visa: Access: Mastercard

* Now in our ELEVENTH successful year *

Further details from the Membership Secretary



Bill Newell
213 Manor Road
Benfleet
Essex
SS7 4JD
Tel. (0268) 754407



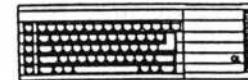
MSDOS LOTUS <--> QL ABACUS

SPREADSHEET DATA TRANSFER

Pylesville, Maryland, USA - Thomas Robbins

Transfer of MSDOS/Lotus data to QDOS/Abacus files is a multi step procedure. It involves going through the MSDOS DBase (or similiar) database program. The requirements are:

PC with Lotus software and DBase software; various shareware programs may be substituted for these expensive programs - A program callled ASEASY may be used instead of Lotus and a program called WAMPUM may be used in lieu of DBase.



FILE TRANSFERS



QL with Abacus/XCHANGE - To transfer the files, you must follow the QL/PSion "rules" concerning file structure. These are found in the "Information" section of the QL manual. Briefly restated, these file specifications are:

- The first line contains the field names, in quotation marks, followed by the records, each on a new line.
- Each field is delimited by a comma.

The Screen dump below is from a data set in LOTUS on a PC.

A4: [W10] 'Creatinine

READY

	A	B	C	D	E	F	G
1	Test	ER	IN	OUT	QC		
2	Glucose	1200	2457	1055	278		
3	BUN	894	1934	955	321		
4	Creatinine	933	2136	1032	297		
5							
6							
7							
8							
9							
10							
11							
12							
13							
14							
15							
16							
17							
18							
19							
20							

03-Apr-94 09:06 AM

Unfortunately, there is no direct way to translate a Lotus file to a comma delimited file. Lotus comes with a translate utility, but while this utility includes translates to a number of formats, comma delimited is not one of them. Instead, we have to use the Lotus translate utility to go to DBase format.

The translate utility will ask whether you want to translate the whole spreadsheet or a range. The range to be translated must have a field name at the start of each column, and be followed immediately by data. Export to a DBase file.

MS DOS LOTUS <--> QL ABACUS - (CONT'D)

Once you have done this, load Dbase (or other database that supports both DBase file format and comma delimited format). In DBase, open the translated file. use the copy command as follows to create a comma delimited file:

copy to a:myfile.exp delim

You now have a file that can, if put on a QL disk, be imported into ABACUS. The file looks like this:

```
"Glucose",1200.00,2457.00,1055.00,278.00
"BUN",894.00,1934.00,955.00,321.00
"Creatinine",933.00,2136.00,1032.00,297.00
```

Crank up the QL and use one of the several MSDOS to QDOS file conversion utilities available - eg DISCOVER (available from Dilwyn Jones), XOVER(available from Digital Precision), QLIBM (available from the QUANTA Library) etc. After the file has been copied to a QL disk, switch to ABACUS.

From Abacus, use F3 F(iles) I(mport) and enter the file name of the transferred file. Abacus will respond with a prompt to import by Rows. Do not accept the prompt - press 'c' to indicate that you wish to import by column.

The following will appear on the abacus screen:

	A	B	C	D	E
1					
2	Glucose	1200	2457	1055	278
3	BUN	894	1934	955	321
4	Creatinine	933	2136	1032	297
5					

Notice that you have "lost" the first line of the Lotus data - this was used by DBase as the field names when the DBase file was created and you will have to re-enter them into Abacus.

In theory, transfer between Abacus and Lotus should be much simpler. The QL Xchange suite now available has an abacus facility to transfer fills to a "DIF" - data interchange format - file and Lotus's translate has an option to transfer to and from this format. Unfortunately, this does not seem to work properly. As time permits, I will be looking at the differences in file structure between these two and hope to find an easy way to do the transfer without having to use DBase.

Working with Linedesign Images Tip

Cranston, Rhode Island, USA - A. Parker Lewis III

When using Linedesign with images that have been converted from a bit mapped image to a vector image with BITM2LDP program included with Linedesign, include the image on a page, especially if the image is small to begin with, you can end up with a large blank space around the image.

This can cause a problem when you combine the image with elements you have created in

Working with Linedesign Images Tip - (CONT'D)

Linedesign. The blank area can cover other elements over so that they won't print, even though the area looks empty. In order to print or view these converted objects they need to be outlined in black first. You'll find that when you outline these objects, part of the outside perimeter of the page is outlined in black as well. I use the following procedure to eliminate this outline and reduce the dead space around the image.

First, I've found that if you go into the EDIT NODES routine and move the nodes of the outline close together and close to the image you usually have only two side lines and one underline and therefore only four nodes to contend with. This reduces the dead space around the image.

Second, to get rid of the nodes of the outline, I've found it easiest to enlarge the image as much as possible while still being able to see the outline nodes. Move and bury the nodes in a dark portion of the image. You are then left with just the image itself as an element with no dead space, it can now be easily combined with other Linedesign elements.

To be sure that the outline's nodes are completely obliterated, enlarge the image as much as possible, place each node of the outline directly over the nodes of one of the elements in the image, this completely hides the frame and any trace of its nodes.

MECHANICAL AFFINITY

515 EAST MAIN ST.	OR	5231 WILTON WOOD CT
PERU IN 46970		INDIANAPOLIS IN 46254
317 473 8031		317 291 6002
FRANK DAVIS		PAUL HOLMGREN

We want to provide service to you the customer. Need something, give us a call. Make all checks or money orders out to either "Frank Davis" or "Paul Holmgren". Thanks! Payment in US\$.

Have you ever wondered about a program you have read about? We have a solution to that! We have many programs available on disk that are demo. Usually they will have one or two functions disabled, but give you enough to find out if the program is what you want. We have :TEXT 87, PAGE DESIGNER 3, QUICK MANDELBROT SCREENS, QRACTAL SCREENS, BANTER, IMAGE PROCESSOR, DISCOVER, TEXTTIDY, S-EDIT, THE GOPHER, CONVERT PCX, THE ERGON DEMOS, FLEET TACTICAL COMMAND, TEXT'N'GRAPHIX, WINBACK 2, ADDRESS BOOK & LABEL PRINTER, SCREEN COMPRESSION. All of these are available on disk for \$3 each...and if you decide to buy the actual program, you can take this \$3 off the full program price.

EXTRA! EXTRA! WE ARE NOW THE NORTH AMERICAN REPRESENTATIVE FOR ALL THE ERGON, from Italy, PROGRAMS! We are also offering for sale the SUPER GOLD CARD, and we have a trade- in program for working Trumps and Gold Cards.

AMADEUS INTERLINK

Walsall, West Midlands, GREAT BRITAIN - Robin J A Barker

I have been requested to put together some details for IQLR regarding our new Amadeus Interlink system. Rather than re-writing existing information, what follows are extracts from a couple information leaflets already available. I, and many others who are familiar with concepts of Amadeus Interlink, believe this product to be of exceptional significance to the QL. No doubt you will come to agree with us as you read through this article.

AMADEUS INTERLINK - QL RELATED INFORMATION

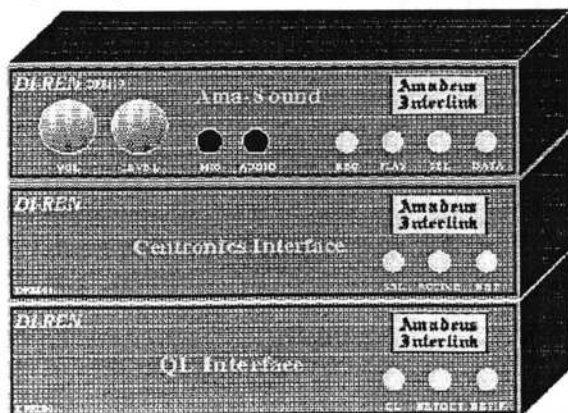
The QL... The fact that the QL has survived until now is quite remarkable. To have achieved this sort of record has taken considerable dedication by both users and producers. It is my belief that the inspiration behind this dedication has been supplied by the machine itself.

The QL has two major features in its favour, firstly; it's ability to painlessly multitask, secondly; the ability to easily extend the operating system. Installing new device drivers for instance, is a doddle! You simply comply with the standard procedure that links the driver into the system.

Problems..... Consider then the problem of adding hardware peripherals to the QL. Whereas adding new device drivers to the QDOS operating system follows a clearly defined procedure, the connection of hardware devices, such as centronics interfaces has not been so organised. This cannot be blamed on the design of the QL. There is a perfectly good I/O interface connector that is supposed to allow up to 8 I/O devices to be added to the machine. Here is a classic example of where the lack of any standardised I/O expansion protocol has resulted in a disorganised plethora of add-ons, that suffer from almost total incompatibility. Amazingly there is (or was!), still no simple way of adding a number of I/O interfaces to the QL.

We have, for some time, considered this problem. Clearly what is required is a flexible, integrated system featuring I/O interfaces that connect easily not only to the QL, but ideally any computer.

Solved.... So welcome to AMADEUS INTERLINK. For the QL, this has been a long time coming. Amadeus has been specifically designed to add, at low cost, I/O interface capability to computers such as the QL.



Amadeus is essentially a network system designed to cope with up to 255 connected devices. These devices can be virtually any I/O interface such as Centronics printer interfaces and other computers. The basic system will run at 3 MHz. This doesn't sound very fast, and compared to the major network players that shift data around in the Gigahertz range, it isn't, but when you consider that MHz stands for some 3 million bits a second it will become apparent just how powerful the system is. (Compare it to your average RS232 baud rate of 9600bps!). The key to assessing

this system is "requirement over cost". The average computer user simply wants to connect

AMADEUS INTERLINK - (CONT'D)

their machine to a few useful devices and does not need a fully fledged network with its attendant costs and incompatibilities. We realise of course that it would not be practical to use a 3 MHz system where lots of interfaces are connected, so to cover this eventuality we are producing network accelerators that speed the system up to 16 MHz. Further networking advances will become available over a period of time. Do not compare computer rated speeds with the network data transfer speed. CPU instruction cycle time is usually very much less than the quoted speed ratings. For example, the Micro controllers used in Amadeus run at 20 MHz, yet the instruction cycle time is 200 ns (5 MHz), and this is an unusually high ratio!

System Control.... At least one interface that is suitable for system control should be connected to a host computer, in this case, the QL. Interfaces that can be used for connection to computers initially will be; Centronics, RS232 and QL Interfaces. We will concentrate on the QL Interface here.

The only suitable place left on the QL to stick an interface is the ROM Port. The main QL I/O connectors are effectively written off and the QL's RS232 serial link capability is too slow to be of any real use. Unlike many of our predecessors, we have designed the Rom Port adapter to include a "through port" in order that devices already occupying the Rom Port may continue to function. To ensure a 'clash free' environment, there is a further link that must be taken to the MDV edge connector (right hand side of the QL), when the through port is in use. We appreciate that this is a bit untidy, but, it is particularly effective in operation. We have discussed the problem of access rights to the Rom Port with Miracle Systems Ltd, the result of which has led to an agreement on how different devices would use the Rom Port on a shared basis. It is hoped that other manufactures will also comply with the standard being set. To reflect this agreement, a second Amadeus Rom Port adapter option is expected to become available that will not require a MDV link. (It should be noted that the first option will not create 'clash' problems).

On every Amadeus device is a micro controller. For those of you who are familiar with these things, the micro controllers in use are of the high performance, RISC-like, CPU variety. They are capable of 5 MIPS.

The advantages of using micro controllers on a system such as this are enormous. They enable us to create a system that is flexible and self sustaining. With Amadeus, it is possible for example to re-direct data from one device to another with no reference being made to the systems host computer. Apart from the initial set-up, Amadeus, very significantly, makes virtually no calls on the systems host computer, thus leaving it free for normal usage.

Modules.... Amadeus comes as a series of modules that are connected via special leads and connectors. The modules are housed in small, smart black enclosures that measure about 110x60x30 mm. Each module contains a specific device such as a controller, centronics interface, RS232 interface and so on. Another feature of Amadeus is that there will normally be no limit as to the number of similar interfaces attached to the system. You could for instance have one centronics interface fitted, ten, or even more!

The low cost, no nonsense design, allows you to expand the system to suit your own requirements.

Inter-Computer networking is a field to be tackled by Amadeus. A standardised communications protocol is to be introduced that will allow any computer, like or unlike, running the appropriate software to readily communicate with other machines, in the same manner as a fully fledged network.

AMADEUS INTERLINK - (CONT'D)

Interfaces.... Amadeus Interlink systems require just one interface to configure the system. This is responsible for setting up the network upon start up, thereafter acting as a normal I/O interface between the host computer and the system. Suitable device driver software will be provided with interfaces, obviously to allow your programmes to access these devices.

The system is being launched in April 1994. The first three interfaces to become available will be the QL controller, Centronics interface and Ama-Sound.

QL Interface

This has been discussed in part before. This device is the QL's way into the system. It can be configured to be the system controller.

Centronics interface.

This interface can be configured to act in two distinct ways. Firstly, as a fully implemented centronics printer interface. By fully implemented we mean similar to standard centronics interfaces found on PC's etc. Full printer status return codes are available, the printer reset line is available as well as the little used printer hardwire line-feed link. Connection is via a standard 25 way D connector.

Secondly; the device may be configured as a Lap-Link style network adapter. E.g., with the appropriate software, bi-directional data transmission may take place between the Amadeus centronics interface and any other correctly configured centronics interface (such as those usually found on PC's). A major advantage of using the Amadeus centronics interface in this configuration is that no special cable adapter is required! A simple 25 way D to 25 way D cable is all that is needed. The significance of using micro controllers becomes plain when used in applications such as this. With the correct software this device can also be a system controller.

Already available is our Micro-process controller. This eminently useful device plugs into any centronics interface (not only Amadeus) and through very simple programming techniques is able to operate 6 make/break relays that can handle up to 3 Amps (at 240 Volts AC)

Ama-Sound. (This replaces our proposed DPR020 sound interface.)

Record and play back sounds via your computer! This device employs 12 bit sampling and benefits from the high audio quality of the ADP CM algorithm. Ama-Sound employs state-of-the-art technology. The same family of LSI's used in this interface, are widely to be found in arcade machines. Recording/Play-back times are subject only to available computer memory. Sampling speeds can be adjusted. At 4 KHz (*4 bits) sampling speed for instance, about 2k bytes of data per second are generated. Full instructions are supplied. It would be possible for instance to add useful features to your programmes like talking prompts, verbal error messages, talking diaries and so on!

Ama-sound comes complete with speaker, microphone and software. Volume and recording level controls are fitted as well as an extra audio input. The instructions include details of how to decipher recorded data.

To become available....

AMADEUS INTERLINK - (CONT'D)

Over a period of time many interfaces will become available. Next to be produced will be an RS232 interface that will cope with all standard data transfer rates up to a staggering 115000 baud. For maximum flexibility you will be able to configure the device for either DTE or DCE at the flick of a switch. Connection will be via a standard 9 pin D type connector.

Memory data buffers, Mains link serial transmitters/receivers and many other novel and useful devices will be added to the system thus giving the QL access to the real world, as never before.

AMADEUS INTERLINK Software Development & Manufacturing Information

Details supplied herein may contain information on new products in the sampling or pre-production phase of development. Characteristic data and other specifications are subject to change without notice

As you know, the main objective of the Amadeus system is to provide a standardised, low cost, integrated, flexible network system. With this system it will be possible not only to connect up I/O interfaces but significantly, different types of computers.

Standard interfaces are being produced, that with the appropriate software, will allow many computers to access the system. Immediately available will be the centronics interface closely followed by an RS232C serial option. These two interfaces will be capable of acting either as normal system I/O interfaces or Computer-to-system interfaces.

Obviously these interfaces will not suit all computers, the Sinclair QL being a prime example. Some Amstrad machines for instance also fall into this category. We intend, as with the QL interface, to produce interfaces to suit other machines where we consider there might be sufficient demand.

There is no reason to suppose that Amadeus will be anything but a considerable success as long as the prime objectives are adhered to. The prime objectives are:

Low cost Ease of use Wide compatibly range

Amadeus is obviously not designed to compete with major network systems. The capture market is considered to be home computer users and small businesses. (A fairly massive opportunity!).

With Amadeus we are introducing an 'Open Door' policy designed to actively encourage third party software writers and hardware manufactures to introduce their products to the system. Clearly, a system that is capable of linking many types of computer and I/O interfaces together, at low cost, cannot have anything but a considerable impact on the current peripheral market.

Software Development... Shortly to become available will be publications that give details regarding Amadeus interfacing. We will welcome any enquires regarding possible programming ventures and will give every assistance possible.

Hardware Development... One of the standard interfaces to be produced will be designed to allow the direct connection of third party hardware to the system. The on-board micro controller responsible for system I/O will also provide 12 bi-directional I/O lines for external use. These I/O lines are configured as an 8 bit I/O port and a 4 bit I/O port. Also available

AMADEUS INTERLINK - (CONT'D)

on every board are two Nand gates, +5 Volts and Ground links. All lines will be brought out to a double row of through plated solder holes that will allow the connection of a variety of standard 2.54 mm spaced connectors to be fitted.

Micro controller I/O port electrical characteristics

Max output current sink by any I/O pin	25 mA
Max output current sourced by any I/O pin	20 mA
Max output current sink by any I/O port	50 mA
Max output current source by any I/O port	40 mA

Micro controllers are able to drive HCMOS and TTL devices. The micro controllers used in Amadeus fall into the 'Controlled device' category.

Micro controller Control Software programmable 'on pin-condition' maps and direct I/O commands will facilitate control of the attached device. It may be beneficial under some circumstances to include direct device control in the on-board micro controllers programme. We will of course welcome any enquiry in this respect. (*Editor's Note: For additional information contact: Dilwyn Jones Computing (see DJC advert elsewhere in this issue). DJC will be marketing the QL version of Amadeus.*)

FONTS FOR DESKJET PRINTERS

FONT CARTRIDGES

22706U	Times Roman	\$35.00 (US)
	point size 15 - 30, proportional	
22706V	Helvetica	\$35.00 (US)
	point size 15 - 30, proportional	

SOFT FONTS

22708C	Times Roman, Helvetica	\$35.00 (US)
	point size 8 - 10 - 12 - 14 - 30, proportional	
22708D	Univers	\$35.00 (US)
	point size 8 - 10 - 12 - 14 - 18 - 24 - 30, proportional	

Note: These fonts work with the DeskJet Plus and newer models (NOT with the original DeskJet). Prices do NOT include shipping.

COMPUTER BUSINESS MART

10215 Buena Vista Avenue Suite A Santee, California 92071 USA

TELEPHONE: 619 449 9040

FAX: 619 449 7929

DJC

Dilwyn Jones Computing

41 Bro Emrys, Tal-y-Bont,
Bangor, Gwynedd LL57 3YT Great Britain
Tel: Bangor (0248) 354023 Fax: Same number

POINTER ENVIRONMENT

More and more people are using it - why not join us!

LINEDESIGN 2 £100.00
Superb vector drawing package for the QL. Version 2 now available - much improved and faster. Ask for a sample printout or the demo version.

CUE-SHELL £40.00
New from Albin Hessler. QL desktop system. Ask for details, impressive software!

DISA version 2 £40.00
Version 2 of a highly specified disassembler program.

DATA DESIGN 3 £60.00
Fast pointer driven database. Disk or memory based files.
DATA DESIGN API £20.00
Applications Programming Interface for Data Design 3.

PAGE DESIGNER 3 £40.00
Very simple to use DTP program for the QL.
UPGRADE PD2 £25.00

GENEALOGIST 3 £60.00
Latest pointer version of this best selling family history/family trees program.
Upgrade 2nd Edition £33.00

SIDEWRITER £15.00
Print wide spreadsheets or text files sideways. (128k)

QINDEX £20.00
Easy to use index creation system for text files.

QPAC1 £19.95
Clock, calculator, alarm, sysmon, calendar and typewriter, ideal with QPAC2.

QPAC2 £39.95
Probably the best way to start with the pointer environment. Extensive instructions.

QTYP2 £29.95
Typing and spelling checker. Check as you type or load files to check the contents.

EASYPTR 3 pt 1 £40.50
Design sprites and pointer driven menus on-screen then use them in your own programs (basic/mcode).

EASYPTR 3 pt 2 £20.00
More advanced basic toolkit and Appendix Manager.

EASYPTR 3 pt 3 £20.00
Library routines for use with C

QLIBERATOR 3.36 £50.00
Compile virtually all of superbasic with this very simple to use program.

QLOAD/QREF £15.00
Fast load/save routines plus names cross referencer for superbasic. (128k)

DJTOOLKIT £10.00
Compact, no fuss simple to use toolkit of Superbasic extensions, ideal for use with QLiberator. (128k)

MEGATOOLKIT £25.00
EPROM version £40.00
Over 200 basic extensions. (128k)

THE PAINTER £25.00
The original and still one of the best drawing QL programs.

QRACTAL £20.00
Pointer driven fractal graphics program.

QTOP £29.95
User front end for QDOS, jobs, files+other utility menus. (128k)

SERMOUSE £40.00
Mouse and software for use with pointer driven programs. Mouse plugs into SER2.

AMADEUS INTERLINK
Coming soon (end of April). Advanced QL hardware expansion system from Di-Ren, with Voice Analyser, fast RS232, full centronics and more, ask for leaflet.

Ask for our free 24 page QL products catalogue. Ergon Development QL software now available too.

QUANTITY DISCOUNT

Buy 2 programs, claim 5% off!
Buy 3 or more, claim 10% off!

TERMS. Postage - Add £2.50 postage for hardware (SerMouse etc). Software sent post free to UK addresses, add £1.00 per program overseas, maximum postage £3.00. **Payment** - Cheques/Postal Orders payable to DILWYN JONES COMPUTING, in Pounds Sterling UK currency only, or Visa / Access / Mastercard / Eurocard / Delta cards. Minimum order value £5.00 (due to bank charges). Goods remain property of Dilwyn Jones Computing until paid for in full. SEND SAE FOR A FREE COPY OF OUR 24 PAGE QL PRODUCTS CATALOGUE.

Ergon: c/o Davide Santachiara - Via Emilio De Marchi 2 - 42100 Reggio Emilia ITALY - Phone x-39-522-70409

FIDOnet 2:335/21.11 · INTERNet Davide_Santachiara@p11.f21.n335.z2.fidonet.org or madmax@prix1.pr.infn.it

• **Ergon news**

All our programs have been improved to run on the QXL and the Atari QVME. They now run with any graphic resolution (eg. VGA, SVGA), system variables can be at any position (full Minerva 2nd screen compatibles): *future proof*. Obviously they run happily with the Pointer Environment. The price in USD/GBP/DEM of our programs is now all inclusive (p&p, bank charges). Prices are lower due to different conversion rates (ITL is very low now). All the manuals are now laser-printed and comprehensive tutorials with step-by-step examples have been added.

• **Floppy Disk Utilities v1.18**

Especially designed for the (Super) Gold Card user. This program fully supports DD, HD (1.44 Mb) and ED disks (3.2 Mb). Disk editor, single / multiple disk copier / formatter / verifier. File recover, Search, Collect, Print sectors. You can also format disks with an extra 2.5 or 5% capacity. 12 pages of tutorial. *If you have an HD or ED disk drive this program is a MUST.* 25\$, 18€, 45 DEM

• **MasterBasic v1.44 plus 1**

This is the most useful development utility for the SuperBasic programmer. Reference/edit Procedures, FuNctions, variables, keywords, combination of tokens (eg. "FOR i=1 TO"), strings... All the reference operations are done in an easy, comfortable and fast way: all the referenced lines are put in a menu and you choose with cursor keys and space the line to be edited. With TAB you can view it on a non-destructive window. MasterBasic can be also used with Minerva MultiBasics. The 39 pages manual includes a five pages tutorial. *Reviewers said:* "Elegant and useful" (S.Goodwin QLW 4/93) "Easy to use and well thought out, even the more casual SB programmer should get a lot of use out of it" (QLW 6/92) 35\$, 22€, 55 DEM

• **Q-Library Manager v2.21**

This is a clever source code extractor / manipulator. Do you need to extract one or more routines from an existing SB program ? QLM will do it for you and will automatically extract routines called by selected ones. The 26 pages manual includes a 5 pages tutorial. *Reviewers said:* "The package is extremely useful for SuperBasic authors" (QLW 8/91) 25\$, 18€, 45 DEM

• **Open World v2.22**

Convert GIF, IFF, TIF, CUT images into QL 4, 8 colours or monochrome screens. *All screen resolutions now supported* (VGA, SVGA...). Free a PC disk with utilities to convert QL screens into GIF images and to read QL disks on PCs, SUN.. *Reviewers said:* "the price is very reasonable OWR does just what is promised at an acceptable speed" (IQLR 3/5) 25\$, 18€, 45 DEM

Prices are inclusive of p&p and bank fees. Accepted forms of payment: * Cheque in foreign currency * Eurocheque in ITL (1\$=1650 ITL) * Cash * International postal order in ITL * Direct bank transfer to Banca Popolare Dell'Emilia SWIFT BPMOIT012 Telex 510031 emipop - Sede Reggio E. C/C 6533/73 D.Santachiara. Cheques payable to D.Santachiara. We sell SPEM's System II cabinet and the PC style Futura keyboard. Two 3.5" disks with PD/demo versions of all our programs are available: send 6 IRCs or 3\$, 2 ,5 DEM. Discounts for group buys. Actually we have not a dedicated QL and line to handle fax-calls 24h, but if you call when I am at home (19:00/21:00 or Sunday 10:00/21:00 local time) I can receive fax calls from our usual number. Dealers please enquire.

• **DEA disassembler v5.21 plus 3**

Interactive and very powerful intelligent disassembler. Commented assembly code (QDOS or SMS notation): Traps (QDOS, SMS, WMan, Ptr Gen ...), System variables, Basic variables, Error keys. *Automatic decoding* even with very long files. *Automatic Toolkit keyword extraction*. All output codes are ready to be re-assembled (Hisoft, QMAC, GST, Metacomco). DEA has a 52 pages manual (8 pages of tutorial). *Reviewers said:* "This program is certainly the most versatile machine code programming utility I have seen on any computer to date" (QLW 4/92) 40\$, 26€, 65 DEM

• **Spectrum 48k/128k emulators**

Again a lot of work has been done on our two best-sellers Spectrum emulators: 1) Switch freely to other tasks under the PE 2) ZX "really" multitasking 3) Full 68000/20/30/40 compatibles 4) Any screen resolution supported 5) QXL's NETwork port supported.

• **ZM/128 plus 1 system**

This package now comprises ZM/128 plus 1, ZM/Accessories, Backuppers, 102 pages manual with tutorial and some ZX PD games/utility. ZM/128 is a 48k/128k Spectrum emulator with Interface 1 emulation. *Features:* Dynamic hardware selection, AY-3-8912 3-channel soundchip emulation, clever memory bank switching for fast 128k Basic emulation, Z80 monitor, Z80 and ZTA file support, high compatibility. ZM/Accessories allow you 1) to convert Disciple, Plus-D, MGT, Opus-Discovery disks into a suitable format 2) To read directly ZX tapes through the QL NETwork port 3) To convert Speculator files & snapshots into ZTA/Z80 format and viceversa. Backuppers allow you to transfer tapes via net/ser port with Interface-1. *Speed (REAL):* >25% ZX (48k) speed on GC, >70% SGC, >100% QXL 45\$, 28€, 70 DEM

• **ZM/hT plus 2 system**

This package comprises the full ZM/128 system plus the incredible ZM/hT Spectrum 48k emulator. ZM/hT is a state-of-the-art Z80 dynamic compiler: *it is the only ZX emulator for QDOS which runs at a reasonable speed on Standard QLs (eg. Trump Card) or at full ZX speed on a Gold Card (it flies on the QXL).* *Reviewers said:* "really spectacular... well worth the price" (E.Forenzi on IQLR 3/1) "ZM/hT is very fast... well worth the extra cost.. an incredible feat of computer science" (S.Goodwin QLW 4/93) "awesome... even an 8 bit QL can run ZX software at reasonable speed ... most sophisticated..." (Last issue of Your Sinclair). 60\$, 40€, 105 DEM

• **MusicManager v1.3**

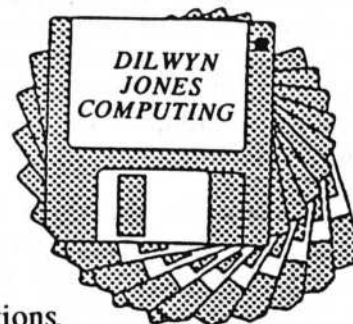
Program to compose music. It can create tasks which play in the background. Psion style. 20\$, 12€, 30 DEM

QL GENEALOGIST 2nd Edition

Billerica, Massachusetts, USA - Gary Norton

QL GENEALOGIST, 2nd Edition is an update to Chris Boutal's very innovative and well received QL GENEALOGIST Family Tree program.

The hardware required for running QL GENEALOGIST, 2nd Edition (to be referred to as QLG), is at least one disk drive and a minimum of 256 KB of memory. TK2 is not required. For those with unexpanded QLs, a scaled back version of QLG is available on microdrive cartridge. This includes the Family Tree portion of the program, but sacrifices the Research and Notes portions.



According to the manual, the QLG runs on all ROM versions, from AH to Minerva 1.90, and on the Atari emulator. It is multitasking, and runs under Taskmaster QRAM, QPAC2, and other "front ends."

After loading the program, the main menu appears. The options are Time Set, Family Tree, Research, Geography, Spelling, Configure, Export, and Quit QLG. Each option can be selected either by scrolling to the one desired and pressing either the space bar or the enter key, or just by typing the option's first letter. For those having a Gold Card, the Time Set option is unnecessary, for others, it is a good idea to set the time, since all the files are date stamped when saved.

Family Tree, when selected, brings up a second menu of Load, Add, or Quit. If you're just starting select Add. This puts you in the mode of starting your Tree database. Load is for a pre-existing files. Once loaded, it will select the highest reference numbered name. At the bottom of the screen, there are selections of (F1)Xref, (F2)Tree, (F3)Menu, (F4)Print, and (F5)Notes.

F1 Xref, for Xreference shows the relationships between selected individuals. Select the first name and press F1. In the left column of the the view screen, an X appears next to that individual's reference number. Next select the second name of the relationship. Press F1 again. A window appears showing the relationship between the two people as well as the nearest common ancestors. To change a referenced name, select the new name and press X. Next, select the second name of the relationship and press F1. Their relationship is given, along with the nearest common ancestors.

F2 Tree creates a diagramed "Tree" of descendants. After selecting F2, another menu appears, giving the options of either loading a Tree file or Generating a new one. If generating a new one, select the name to begin with, and the maximum number of generations will appear, which is the default number. If all the generations are desired, press enter. If not, select the number of generations desired. Use the arrow keys to scroll through the tree. Depending on its size, a tree could cover several screens. When in Tree, F3 selects a menu including Quit, Go to, Annotate, Save, and Find Name. Most of these are apparent as to what they do. Annotate allows text to be added to the tree. Use the arrow keys to move to where you want the text printed. Important notes about individuals can be added, allowing for a quick reference. F4 prints the tree. Tree prints in condensed print, at 132 columns to a page.

F3 Menu gives menu selections Exit, Reports Find name, Markers, Update, View, Browse, and Test. Exit returns to the Main Menu screen. Selecting Reports gives the Reports menu.

QL_GENEALOGIST - (CONT'D)

The Ancestors report, when selected, asks if you want an Alphabetic, Chronological, or Unsorted listings. It then asks if you want the listing shown by the last of first name printed first, then if it is to be printed to the screen, the printer, or to a file. Ancestors shows the direct line of the selected name through the generations as far back as the database goes. Each line of the listing shows the name, dates of birth/death, A#, where 1 is the subject, 2 is the subject's father, 3 the mother, etc. and then whether the person is the subject's parent, grandparent, etc.

Pedigree provides the same information as Ancestors, but the format is to list by parents, grandparents, great grandparents, etc. As in Tree, you are asked how many generations to print, with the full available number being the default. The overall limit is nine generations, with an option to leave out the "spacers" for missing names. This solves one of my criticisms of the first version of QLG because it can be so paper intensive to print out a large database, with many names in some generations unknown. There can be much blank paper in a pedigree printout.

Snapshot lists all the names in your database alive, or if the dates of death/birth is not listed, potentially alive in a selected year. If the year of death is not known, it takes the year of birth and adds 100 years. Similarly, if the date of birth is not known but the date of death is, 100 years is subtracted. I'd like to come from Mr. Boutal's stock. Snapshot gives similar display options as the previously detailed reports. Each line lists Last name, First name, Date of Birth, and Age in the selected year.

Head of Families lists all individuals whose parents are unknown. This can provide a quick reference as to where new research needs to begin.

Index lists all names in the database in alphabetical order. You are asked which letter you wish to start with and which letter to end with. As would be expected, A and Z are the defaults. It also asks if you want the listings with unknown surnames to be included or excluded. If included, they are listed at the bottom. Each line includes Last name, First name, Dates alive, and the reference number.

Names gives, by generation, the Surnames of the ancestors of the selected person. It asks how many generations to include, with the highest available number as the default.

If you wish to find a particular name or group of names, use the Find Name option. Give any first or last name or portion of either, or both, and all instances of your sample are listed. Each listing gives the first and last names, life range dates, and reference number. At the end, the number of matches to your query is listed. Instead of using the Index report, Find Name can be used if you need to know the reference number of someone.

A new option in QLG Vers. 2 is Markers. You are allowed to use eight provided markers to identify names. Once Markers is selected, another menu is presented with the following options.

Exit returns you to the previous mode.

Clear removes any markers of a specified type.

Key lists the eight characters used as markers.

Load loads a created Markers file.

Save saves a created Markers file.

Describe has you give up to a 15 character definition to the characters provided in Key.

QL_GENEALOGIST - CONT'D)

Operate provides a menu to allow operations on the marked names. Some of the operations have a YES/NO/ALL/QUIT selection. The Operate options are:

Family List - prints to the printer all individuals marked with a particular marker.

Notes List - prints the notes of individuals marked with a particular marker.

Index - prints an alphabetical or chronological listing of all individuals marked with a particular marker.

Research - lists the research data on individuals marked with a particular marker, in various formats.

Purge Names - deletes all individuals marked with a particular marker.

Delete Notes - deletes all notes of all individuals marked with a particular marker.

Xreference - see F1 XRef above.

The next Menu option is Update. An explanation of Reference Numbers is necessary at this point. When names are entered into the database they are sequentially numbered. The first entry into the database is given Ref #1, the next 2, etc. Relationships are made between individuals by the parent's (or husband's) reference numbers. When Update is selected, a menu is presented with several options.

Add allows a new entry into the database. It asks for Christian (first) name, Surname, Year of birth, Year of death, Dad and Mum. In the Christian name section, I put first and middle names. If the year of birth is not known, it allows you to enter the sequence number in family, such as 1 for 1st born. If the person is still alive, enter -1 in year of death. If dead, but the year is unknown, enter 0. Dad and Mum are their reference numbers. This feature allows for easier entry if older generations are entered first, working down to the later generations. If the reference numbers are not known, enter 0. If a wife's parents are not important to the tree, under Dad enter the husband's reference number as a negative.

Change works similar to Add but updates an existing entry.

Delete wipes out an existing entry - good for divorces with no children.

Save this saves your database to a disk file. When adding to or changing your file, make sure you stop here before quitting.

New brings up a sub menu. Exit is obvious. Also available is Load (Overwrite), Merge, and Zap.

Identify is the same as in the Reference section. See below.

Global Names allows any of the surnames in the database to be edited.

The Browse option is also related to the Reference section. This option allows you to look at the reference data while in the Family Tree section. You're allowed to select the type of reference data desired. The loading criteria is defaulted to the current name, but this can be changed.

The last option under Family Tree is Test. This is useful in checking your data. It gives warning statements if there are or appear to be errors in the entries, or if there are omissions of required information. Not all warning statements are valid though. In my database a husband is 14 years older than his wife. A warning message was given that the age difference was questionable.

QL_GENEALOGIST - (CONT'D)

F4 Print sends a hardcopy of the view (screen) to the printer.

F5 Notes, when selected, gives a second menu, consisting of Exit, Load, Add, Text File, and Make Notes. Once in Notes mode, another menu is available. Included in this menu is Exit, Load, Add, Text File, Change, Delete, Save, Global. Since these menus are complimentary and possess mostly the same commands, I'll cover both as one menu. Exit, as with the other menus, takes you back to the previous menu or screen.

Load a Notes file using the Load command. The full name of the file is to be typed in, including the device name and the extension.

Add allows entries for the Birth, Baptism, Marriage, Death, Burial, and Other. The date of the event is entered, with a text line of up to 50 characters. The number of characters can be altered in Configure Dimensions. Change allows an existing Notes entry to be edited, and Delete eliminates a Notes entry. Save creates a new Notes file or overwrites an existing one.

Text File is used to attach file name to a person's name as notes. The second menu includes Name, which allows the addition of the file name and Display, which shows the file on screen.

Global allows work on all Notes instead of just the current subject. Included in its menu is Find Note. You are asked for a string of text to be located. A search is made through all notes in memory. Also included is Print. This command prints to the screen, printer, or file all the notes. Several options are provided. Make Notes is the final Global command. For details, see under Research.

Back to the Main Menu, after Family Tree is Research. There are twelve segments to Research. Each segment contains a certain type of information. The segments are: Civil Register Birth, Civil Register Marriage, Civil Register Death, Parish Register Baptism, Parish Register Marriage, Parish Register Burial, IGI Baptism, IGI Marriage, Census, Monument data, Wills, and Other.

Each segment contains twelve records. These include Record number, Event type, Date of event, Date stamp, segment type, Reference number, Link number, Christian name, Surname, Place, Source, and Comment. The Research menu gives Exit, Reports, Update, Identify, Make Notes, and Statistics.

Reports gives the options of Load or Markers. When Load is selected, Birth/Baptism, Marriage, Death/Burial, Other, and All are offered. When the selection is made, a box appears on screen asking for information. You must now enter the Christian name(s), Surname, Place name, Year range, and the max. number of records. Markers works the same as in Family Tree.

Update asks which segment to modify. You are allowed to add, change, and delete Research Records.

Identify is a time-saver in preparing Research files. It fills in the ref no field of the research record with the one in the Family Tree section. Generate searches for possible matches and Match asks the data enterer for a Yes/No/Maybe response. Show displays the whole document during this process.

Make Notes extracts segments of the Research Data that have been selected with the Identify command, and are saved as a Notes file, which can be displayed or printed in the Family Tree section.

QL_GENEALOGIST - (CONT'D)

Statistics provides a tabulating table with all Research Segments listed, the number of records per segment, the number identified, the percentage identified, and the from date and to date of the data.

Geography is an option that allows the tracking of the places your ancestors are from. It is based on the United Kingdom, but can still be useful for other locations. However, to get all of the benefit out of this mode, the information must be from the UK. The first menu gives the options of Update and Reports. These are similar to those options in Research.

Update allows information on Places, Grid References, and Distances, to be entered. The Grid References are based on a UK National Grid System, using two alpha and four numeric characters. The Map option has you select the Central Place (where everything else is measured from. It next asks how many miles (can be changed to kilometers) you wish the radius from the central place you wish the map to be. It gives a default of 50 miles (again this is on a UK scale). Much larger areas are accepted, though. Distance gives the miles between two places. Finally, you have the option to Save.

Reports has you select the records to be loaded, as in Research. Your selections are Distance, Map, Time Span, and Place-Time. Distance is similar to the above, giving the distance between two selected places. Map prints out the radius you've selected, with a listing of the places and the miles from the central location. Time Span is similar to Map, but also lists the number of times an event occurred at a location, starting with a given year. And, Place-Time gives a matrix chart listing the places against the year of an event at that place. As mentioned, the shortfall of Geography is that its based on the UK grid reference numbers. These are used to locate the different places on the map. Without the Grid References, the program won't know where to place the towns, villages, etc.

Spelling allows up to ten alternative spellings of a surname. An example would be if some ancestors spelled their surname Smith. Another branch might spell it Smyth, an a third Smythe. This option gives the different spellings the equivalent name. When using the options Identify and Find Name, it will permit all of the variances in spelling to be included. If there should be more than ten spelling variations, use two pages, just making sure that on both pages, there is an equivalent spelling. As in my example, start off both pages with Smith. The pages will be saved automatically when the ESC key is pressed.

Configure allows the defaults built into the program to be modified to suit the user. The areas for configuring are Dimensions, Colours, Layout, Printer Codes, Filenames, Options, then Save Config.

Dimensions alters the parameter sizes. The defaults for Family Tree are Number of names in database = 1,000; Characters in christian name = 20; Characters in surname = 10 (these two combined cannot equal more than 56); Number of different surnames = 100; Maximum number of Views = 5; Import number of notes = 100; Maximum length of note (max 50) = 50; and Maximum screen length = 50. The defaults for Research are Maximum length of comment field = 20; Maximum length of place name = 20; Maximum length of source field = 10; Number of different place names = 100; Number of different comments = 100; Number of different sources = 100; and Import number of records = 1,600.

Colours allows the Display, Menu and Status colo(u)rs to be changed to your liking.

Layout allows you to change the hardcopy and report facilities to match your printer. Included in this is Page length = 66; Top margin = 3; Bottom margin = 3 (set both margins to

QL_GENEALOGIST - (CONT'D)

0 for continuous output); Left margin = 5; Printer baud rate = 9,600; Printer device name = ser1; Page width - normal = 80; Page width - condensed = 132; Multiple column listings = on.

Printer Codes allows codes to be entered for Preamble, Postamble, Condensed on; Condensed off; Expanded on; Expanded off; End of line; and Top of form. Simply change the decimal character codes to match your printer codes.

Filenames allows default filenames for Family names; Notes file; List file; Export file; Tree file; and Markers file.

Options have the following defaults: Slot (tree) = 22 (min 13); Tolerance (identify) = +/- 5; Surname first = no; Reverse pan/scroll (tree) = no; Geography units = miles; Vertical line = 1; Marriage symbol = '='; Number of annotations on tree = 20.

Export is the last command on the QLG menu. Export allows the files to be inputted into the Psion Suite or other suitable programs for processing that cannot be done in QLG. Once selected, your options are Family Names, Notes, Research, Tree, and Places. The first three selections are for loading into Archive. Tree allows the data to be exported into Abacus, and Places allows export to Easel.

The Family Names export file has the following fields: "ref_no", "surname\$", "christian\$", "father", "mother", "yob", "yod". An example given in the manual is "BLOGGS", "Frederick", 1,2,3,1896,0. Notes has a similar file type, with fields of "type", "year", "date", "ref_no", "notes\$".

When Tree is imported into Abacus, it appears as it does in QLG. The benefit of loading it into Abacus is that it allows for editing not offered in QLG's Tree. While Tree offers the option of entering notes, there are still limits of what can be done. Abacus allows much greater manipulation of the Family Tree. You are not limited to the length of the notes, and if for some reason you would choose to make an off-shoot from the tree, it is easily accomplished.

Places exports the Geography files into Easel. I haven't tried this option, so I'm paraphrasing from the manual. Run Export repeatedly for the different places. This creates a separate file for each place. These separate files can be loaded into Easel successively to Easel to give multiple graphs. First a template is loaded into Easel, then the files.

Section 8 of the Manual is a Tutorial. It is divided into Family Tree Stage, Research Data Stage, and Identify Stage. The tutorial is a five page exercise. It runs through all the important features of QLG, telling the user what is going to happen, and then in a keystroke by keystroke progression, tells how to do it. An example of this is: First set the date:

T (date) <TAB> month <TAB> (year) (hour) <TAB> (minute) <TAB> <ESC>.

I would highly recommend the user doing the tutorial exercises prior to entering data. If attention is given to what keystrokes are being done, and why they are being done, there will be no problems in entering your own data. It will explain how the data should be entered logically, so as it is added to, it will be easier to accomplish. Also, you achieve a familiarity with the commands and the features of the program.

A demonstration file, ROYAL names is provided on the disk. It is a family history of the British Royal Family, from William I, born in 1027, to the present Queen Elizabeth II. Even though this is not a typical family, it gives the first time user a chance to look at the different reports and other features offered.

QL_GENEALOGIST - (CONT'D)

QL_Genealogist, Second Edition is most definitely an outstanding program. If one is contemplating the task of preparing a family history, s/he will be well served with this program. For a serious family historian, this program is grounds enough to stay with the QL or QDOS based system. I doubt that you'd find a program for any computer that would offer more than this one. If you are into the pointer environment, check out the Third Edition of QLG. If you've been keeping your family history on the Archive based Relation, I would highly recommend getting a copy of Chris Boutal's QL Genealogist, versions 1, 2, 3, or the 128 KB version. I haven't tried the 128KB version, but you just may be able to use your database from Relation with QLG. If you have any interest in this field, place your order for this program, and get going!

Don't Forget: "Miracle in Newport II"

14 May 1994

Howard Johnson Mortor Lodge
Route 114 Middletown, RI - USA

10:00 am - 6:00 pm



GT-Prolog/QL




Edinburgh Syntax
Incremental Compiler
Automatic Garbage Collectors
Tail-Recursion Optimisation
First Argument Indexing/Hashing
32bit integers / 48bit reals
255 byte atoms / 32kb strings

Interactive Workbench (needs 512k)
* Windows, Menus, Dialogues
* Editor
* Debugger
User Guide, Reference Manual
Full QDOS compatibility
Configurable Memory up to 16Mb

Price including postage/packing £89.95

For more information contact us at
Rosebank, Stream Road,
Upton, Oxon, OX11 9JG,
United Kingdom
Tel/Fax: +44-235-851818

 **Grange
Technology
Limited**



The Town Crier

announces

UPCOMING EVENTS

14 May 1994

(SATURDAY)

MIRICLE in NEWPORT II:

Contact: Bob Dyl
(US 401 849 3805)

Howard Johnson Lodge
351 West Main Road
Middletown, Rhode Island
USA

21 May 1994

(SATURDAY)

QL SHOW

(Sponsored by Sin QL Air)

St Joris College
Roostenlaan
Eindhoven
NETHERLANDS

18 June 1994

(SATURDAY)

QL'S 10th BIRTHDAY SHOW

(Sponsored by Miracle Systems)

Eurovolleycenter
Beneluxlaan
Vilvoorde
Brussels
BELGIUM

25 June 1994

(SATURDAY)

QL WORKSHOP

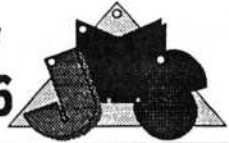
(Sponsored by T F Services)

St Helena's Church
St Quintin's Avenue
London
GREAT BRITAIN



JOCHEN MERZ SOFTWARE

Im stillen Winkel 12 • 47169 Duisburg • Germany
 ☎ and Fax: 0203-501274 • Mailbox: 0203-591706



typeset93-ESC/P2 - Dedicated text87 printer drivers for all EPSON printers with ESC/P2 including the new Stylus 800 and the upcoming Stylus 300. Supports the scalable fonts, special characters and block graphics for drawing borders etc. **DM 69,90**

QMAKE - Version 2

Painter-driven Make program for the GST/Quanta Assembler package. Very comfortable, with many options (including library-building). **DM 44,90**
Update with new manual DM 16,-

HyperHELP for SuperBASIC - Instant help in SuperBASIC! It displays a list of SuperBASIC procedures, functions and keywords currently existing in your machine. Simply click on the name and you get extensive help (English or German). The help files can be updated with any editor, QD, Quill, Text87 so that you can update and add remarks whenever you want. **DM 49,-**

QMenu - the Menu Extension. QMenu is an interface with pre-defined menus (e.g. multi-column file-select, simple-choice boxes, select from lists). The menu can be used from SuperBASIC, machine code and other languages. New character-select menu. [V6.0] **DM 39,90**
Update with new manual DM 16,-

QD Version 6!

Brandnew version with brandnew features! **Selective automatic tab compression/expansion!** You can, for example, make QD compress all spaces which fit to tabs into a tab on given file extensions, say _ASM, and get them automatically expanded when the file is loaded again! This saves, even on well-documented source files, between 30 and 40% disk space!!! It also speeds up assembly, as the file gets shorter! Another VERY useful feature is the **permanent line/column display** which does not slow QD down! Editor handling and line handling speeded up. **Bracket match** - position cursor over a bracket () [] { } * etc. and press a key-combination, and QD finds the matching bracket or parenthesis! Some minor improvements, keyclick within QD added etc. **QD Version 6 DM 125,-**
Upgrade from Version 5 with new manual DM 26,90
Upgrade from Version 4 with new manual DM 49,90

QL Hardware & Spares

FLP/RAM Level 2 device drivers for SuperQBoard DM 56,-
FLP/RAM Level 2 device drivers for TrumpCard DM 56,-
SER Mouse software driver DM 40,-
SER Mouse Package (mouse, adaptor & driver) DM 87,-
ZX8301 DM 19,90
ZX8302 DM 17,90
QL Keyboard membrane DM 28,- 2 membranes DM 50,-

QL-Emulators for ATARI

QVME - High-Res QL-Emulator for ATARI Mega STE and ATARI TT PRICE CUT!! DM 549,-
EXTENDED4-QL-Emulator for ATARI 260ST, 520ST/STF/STFM, 1040ST, Mega ST (but not STE!!!) DM 289,-
QL-Emulator Brochure DM 13,-

Ask for more information about the QL-Emulators!

TERMS OF PAYMENT

Postage and package (Europe) DM 14,- (if total value of goods is up to DM 50,- then only DM 9,-). (Overseas) between DM 14,- (1 item) and DM 35,- (maximum). All prices incl. 15% V.A.T. (can be deducted for orders from non-EEC-countries). E&OE. Cheques in DM, £'s, Eurocheques and Credit Cards accepted.



The Lonely Joker Version 2!

Now six different games in one! Another three, even more complex patiences have been added to the existing three: Spine, Crapaud & Four-in-a-Hand (two of them work with two packs of cards). More options (different patterns for backside of the cards), high-scores, moveable windowetc. **DM 59,-**
Upgrade from V1 (double fun - 1/2 price) DM 29,-

QSpread - Spreadsheet program for the Pointer Environment. Mouse- and/or keyboard-controllable! Maximum 32768 cells. Macro functions. Easy, quick and comfortable block handling and entry. Many additional functions, which belong to today's standard-equipment: Help, Button, use of the Scrap. The current version adds missing features and more, e.g. cell-reference-adjustment, echo, IF and comparisons, toolbar, time & date functions. You can now print the formulae. [V1.25] **with comprehensive manual DM 169,-**
Update with new manual (useful if old version is <1.20) DM 16,-

QSpread Demo Version - send 3 Internation Reply Coupons if ordered alone, otherwise enclose a spare disc with an order or update and it is free!

QMON / JMON - Brandnew version of the well-known Monitor, Debugger, Disassembler. Also for the Pointer Environment. QMON now recognises the various stack frames and cache handling of the different processors (6800x to 68040). A Trap level can be set, and a permanent Breakpoint has been introduced. JMON is a job-monitor with all the featur of QMON, but it has got its own, moveable windows, which may be put to sleep etc. - really embedded in the Extended Environment. **New Version (German only) DM 67,-**
Upgrade to V2.08 (German or English) DM 32,90

QD + QLIBERATOR = QBASIC

Finally, it is ready: QBASIC - the interface and the parser was the missing part between QD and QLiberator. Write your BASIC program in QD, press F10 and then the compiler QLiberator can be started and, if the compile run is successful, the resulting program will be started automatically too. No boring save and load, no long loading into BASIC etc. With QD and QBASIC you get the most comfortable BASIC environment you can get under QDOS!

Here a list of advantages: You can have as many BASIC programs as you want (i.e. your memory allows) at the same time, as you can run as many QD's and compiled programs as you want / Very comfortable editor under the pointer environment replaces the less comfortable standard editor, and now block copying and search/replace is not a problem anymore / Structured programming is easier, as you are allowed to program line-numberless programs / Very long loading time in standard BASIC are past - QD loads much faster! / Help at every time wherever you are in the program - the QD HyperHelp system is included / If the parser finds a syntax error during parsing it tries to position the cursor in QD over or near to the error. The only minor disadvantage: the parser knows the whole BASIC syntax (and all future resident extensions) with the exception of WHEN.

Owners of QD and QLiberator (QD has to be version 5 or 6) only require the QBASIC extension:

QBASIC alone only DM 49,90
QD & QBASIC only DM 166,66 - you save more than DM 8,-
QLiberator & QBASIC only DM 199,99 - you save nearly DM 9,-
QD & QLiberator & QBASIC only DM 299,99 - you save nearly DM 34,- !!!

Last Minute news: CueShell - the new Desktop! DM 100,-

UPDATES

Updates of our software are usually free. The exception: major changes on a program (a new Version number before the '.'). Always send the master disk(s) to us, together with 4 international reply coupons for up to 5 discs or 8 IRC's for more. If you send updates together with a software order, then the return postage is covered by the wholesale postage. If a disk is faulty, add 1 IRC for a replacement. As the software changes from time to time, you may order a new manual together with the disc update. With upgrades, you automatically get a new manual.

Applications

QDOS Reference Manual DM 89,90
FFI DM 49,90
QPTR DM 92,-
QSUP DM 79,90
QLQ DM 69,90
Thing & EPROM Manager DM 61,50
EasyPTR Part 1 DM 89,-
Part 2 DM 49,- Part 3 DM 49,-
DataDesign V3 DM 149,-

Games

Diamonds (Action) DM 35,90
BrainSmasher (Strategy) DM 45,90
Arcanoid (Action) DM 35,90
Firebirds (Action!) DM 35,90
SuperGamesPack (various) DM 90,-
QShang (Strategy) DM 45,90
MineField (Strategy) DM 39,90
The Oracle (Strategy) DM 49,90
BlackKnight (Chess) DM 119,90
DoubleBlock (Tetris) DM 42,90

LineDesign V2

Now available in Version 2. The program is much faster, more user-friendly, supports more printers, includes more fonts (130 in total). It has better text handling and supports special characters now as well as kerning. Other new features are bitmaps, thick lines, pies, squares with round corners etc.

LineDesign Version 2 DM 259,-
Upgrade from Version 1 DM 129,-

Talking to the World (Compuserve)

Santa Clara, California, USA - James D. Hunkins

Note: the information in this article is the most current obtainable from Compuserve. However, due to possible errors or changes, please check with Compuserve for the latest.

In addition to logging into specialized bulletin boards such as QBOX USA to talk with other QL users (see the last issue of IQLR), you have the opportunity to access an even bigger part of the 'information superhighway' that has been much talked about. And unlike what many people think, this so called superhighway has been around for some time and is rather easy to get onto.

But why would you want to. The only way to find out is to get online and try it. In this article I will attempt to give you some flavor of just what you can find out there, who you can meet and what you can do. A quick sampling of the things that I personally use the networks for follows...

1. communicating with others with similar interests around the world > QL users, backpackers, engineers, software writers, Star Trek fans, friends and family, etc
2. research > company backgrounds, engineering questions, product reviews, software and hardware assistance
3. shopping > airline tickets, general merchandise, compact discs
4. general > weather reports, travel information, stock updates
5. games > with other users around the world
6. learning > artificial intelligence, operating systems

And there are uncountable other things going on there. Now that I have your attention, the rest of this article will go over the types of services you can log onto. It will then go into a specific example, using Compuserve, which is rapidly becoming reachable from virtually everywhere in the world.

Types of Services

There are many choices of network services that you can access. There are local dedicated ones such as the different QBOX BBS's around the world, plus many others without a specific purpose other than as a central gathering point. Some are free of cost other than phone toll charges. Others have a subscription fee, usually by the month or hourly.

You can also access the bigger networks. Common in Europe is Fidonet, while Internet is a big one here in the USA. To get onto one of these you have to either have a connection directly through a university or business, or you can access them through local BBS's with 'gates' (this simply means a connection into another network or BBS).

The last type of network that I am familiar with are the commercial ones such as Compuserve, America Online, and Prodigy. These services are run for profit and therefore always have a cost involved. However, with proper use, the costs can be minimized and the services and connections that they offer are extensive and usually easy to use!

To access a commercial network, you need to join them. If you buy a new modem you probably received information on one or more of them. You can also find them listed in many local phone books and find their advertisements in many computer magazines. If you would like to try Compuserve and have problems finding out how, please contact me through the superhighway on QBOX USA, Internet, or through IQLR. I will try to help.

Talking to the World - (CONT'D)

Many of the commercial services offer local phone lines or can be accessed through 'gates' from other local services. For example, CompuServe, in addition to their local phone numbers, has many international access points, including SprintNET, InfoNet, Mercury 5000, Telepac, etc.

Introduction to CompuServe

The commercial service that I am most familiar with is the CompuServe Information Service (CIS). It probably has one of the largest world wide networks of access points. Nearly every month CompuServe adds new local nodes at different locations around the world.

The things that I find the most attractive about CompuServe are the number and variety of services and Forums it offers (the CLUB forum for example directly supports all Sinclair computers). It is relatively easy to use and with proper care, can be very economical (this is very dependant on where you are calling from). It is also available through many types of computers and modem programs. You do need to be careful when selecting a commercial service, as some are PC oriented and may be a hassle if even possible to access from your QL.

When joining CompuServe, you need to get their basic membership package, without any software. CompuServe sells PC Windows and MacIntosh front end software, which you don't want. The membership package will include instructions for logging on the first time, a temporary membership number, a password, and a book(s) describing services and how to get around. The last membership kit I saw supplied a toll free 800 number in the United States for the first log on, along with local phone numbers to use for future sessions. It also came with \$25 CompuServe credit which more than covered its cost.

At this point I will become more specific. I will refer several times to the modem programs that I am most familiar with. I now exclusively use QPTR V1.27 for the pointer environment (thanks , Jonathan Hudson, excellent program). I will also refer to QEM V4.0 for users who do not have the Pointer Environment (can't believe anyone doesn't have it yet!).

Services Available

Before we get into the drudgery of costs, lets check out in more detail just what is available on the CompuServe.

CompuServe offers a group of services that are accessible on a flat monthly fee with no access time limit. These are called BASIC services (see Costs - Standard Pricing Plan). They can be broken down into seven categories; NEWS-SPORTS-WEATHER, REFERENCE LIBRARY, SHOPPING, MONEY TALKS, GAMES & ENTERTAINMENT, COMMUNICATION EXCHANGE, and TRAVEL AND LEISURE.

CompuServe also offers an extensive group of other services that charge an additional hourly access rate (Extended services). These include the forums, kind of like a club, which span a tremendous range of interests. One is even dedicated to just Sinclair computers. You can also access major databases, financial services, extended news services, etc.

First, an abbreviated look at some of the BASIC services one finds; the NEWS-SPORTS-WEATHER with Associated Press access updated hourly, and worldwide weather including maps and Satellite maps. The maps are now viewable on the QL (download in VGA mode) with the UNGIF program by Carlo Delhez. UK news and sports, the US News & World Report Magazine, and a group of syndicated columns are also offered.

Talking to the World - (CONT'D)

The REFERENCE LIBRARY offers the American Heritage Dictionary, the Grolier's Academic American Encyclopedia, Consumer Reports, and several databases.

SHOPPING should be obvious. You want to buy it. Log on, shop around, compare prices, and have it shipped (usually to anywhere in the world). This includes everything from trips to flowers to computer accessories to cars. You can also join a discount shopping club while you are hanging around.

MONEY TALKS offers current stock quotes, a mortgage calculator and FundWatch Online by Money Magazine.

GAMES & ENTERTAINMENT offer some basic games to be played online (hope you have the no-charge local connections for these). They also have movie reviews and several games designed for playing across the network with other players (I have been told that this is very addictive, but I have carefully avoided them, so far). You can even get soap opera summaries.

COMMUNICATION EXCHANGE allows you to send and receive mail world wide, get help with CompuServe or check your current billing, read classified Ads, play around in a practice forum (more on forums shortly), or look up other members.

Finally the TRAVEL and LEISURE section allows you to book a trip (plane tickets, car, hotel, etc), check out US State department advisories, or even check with the Lanier Golf Database.

Now for a sampling of the Extended services, let's first visit the forums. A forum as I mentioned is like a club. When you are online in a FORUM, you can talk with other forum members with similar interests to yours. You can exchange tips, get/give help with problems, complain or complement (hopefully the later), download or upload programs and files, and even talk live in a conference with others.

Risking a break in the flow of this article, I would at this point like to invite everyone who gets onto CompuServe to join us in our own Sinclair forum. To get there, just type GO CLUB at any prompt when you are on line and join us. Joining a forum simply means that you are added to the membership list and can get/send messages and access the Forum library.

Once you are in the Club Forum you will notice several sections, including ones dedicated to us Sinclair enthusiasts. You can find a large number of public domain files for the QL (and other Sinclair computers) in the respective library. We also constantly exchange messages between each other, with questions, answers, and discussions of where to go for a good beer (OK, so I threw that one in to get something new started). Since we have members from around the world, we get all kinds of late breaking news. You will also recognize some of the names as major players in the QL market. As usual, everyone is very helpful and friendly.

There are also Forums on many other subjects, including the outdoors, cooking, astronomy, artificial intelligence, automobiles, graphics, and just about anything else that you can think of. Some are sponsored by companies or magazines, while others (like our CLUB forum) are run entirely by CompuServe and the many hardworking Sysops. Sysops are the people that are responsible for how a forum runs. They can help you with access problems, they maintain the library, and they monitor the message threads (a thread is a group of messages tied together with a common subject/thread) to make sure that everyone follows common sense and etiquette in their use of the Forum. In other words the Sysops are the all-around good guys/gals that keep things running.

Talking to the World - (CONT'D)

A short note, some of the extended services are run by private companies and may charge an additional fee for their services. However, before anyone can charge you anything, CompuServe has done a good job in making sure you know about the charge in detail and that you agree to it. It would probably be impossible to get charged for anything extra without you first accepting the charges.

In addition to the many forums, another extended service is the CB Simulator. This one acts just like a CB radio, but instead of going on the airways, it goes across the lines. You can conference with others on open channels or in private groups, just like a CB but without the background noise.

Extended news services are offered with more detailed or specific coverages. Many allow you to scan for stories on specific topics. Other services are constantly being updated from around the world.

The extended financial services help by constantly updating the market news, offering company reviews and financial status reports, and offer screening, analysis, and forecasting services, to name just a few.

The reference library is also expanded when you are willing to foot the bill. There are databases available on nearly every subject, such as business, science and technology, social sciences, patents, and entertainment. You can use any of several database search groups to help you find what you need.

The travel options also expand. This one I will leave up to you to explore, as I am basically cheap and do quite well with the BASIC services travel options.

Costs

Now that you have a rough idea on just what is available on CompuServe, lets get down to business. The cost of accessing CompuServe can be broken into three parts; (1) local phone toll (long distance) charges (2) the membership/access monthly billing by CompuServe and (3) Communications (Network) Charges. The phone charges occur if you do not have a local phone number to use. If you are fortunate, you either have or will soon have a local phone number and will avoid long distance calling charges entirely.

The membership billing is what CompuServe uses for expenses and profits (remember, CompuServe is a business and therefore needs to make money - just like the rest of us). Two different billing plans are available, but unless you plan to log on for perhaps just a few short sessions a month, you will want the standard billing plan (take my word for it, you will be hooked, choose this one).

The standard billing plan has a flat monthly charge of \$8.95 (all costs given here are in US dollars) and allows unlimited access to the BASIC services. For an extra hourly charge you can also access a huge variety of extended services. This charge is according to your baud rate. For 300 to 2400 baud, it is \$4.80 an hour. For 9600 and 14400 (not available in all locations), you are charged \$9.60/hour.

The Communication charges is the one that varies the most. No matter how you access CompuServe, whether through a direct local phone number or through another network, there is always a cost to make that connection. This charge is added to your normal CompuServe billing.

Talking to the World - (CONT'D)

This cost varies, depending on where you are located. Here in the USA and in Canada there are CompuServe direct phone numbers in nearly every medium or larger sized city. These no longer carry any additional charge to use. I presume that CompuServe absorbs it as a cost of doing business and buries the cost in your monthly membership/access bill.

In France, Germany, Belgium and the United Kingdom, if you are calling during non-prime hours (1900 to 0800 weekdays, all day weekends, local time), you also have no additional charges on CompuServe direct lines.

Many countries have accesses going for about \$8 to \$10 an hour. Note that costs also may differ greatly between prime and nonprime hours. If you live where CompuServe access is limited, it may really cost you. For example, in Kuwait, they have to use International SprintNET which has an hourly charge of \$49.70. Later I will give a few tips on time (and therefore cost) saving- attention QL users in Kuwait!!!

Logging On

Now for the fun part, how to log onto CompuServe. Please note that it is impractical for me to go into morbid detail on using CompuServe. That is what the instruction manual is for (I know, I hate to read them too). But believe me, it will save you time, money, and frustration. What I will do here is to briefly walk you through the logging on process and any specifics to the QL world.

First you need to set up your modem program to communicate with CompuServe properly. The following can be used as default your first time online (please check your membership information for any changes). Set the following:

Terminal type : VT100 (delete char = Back Space, ASC 8)
Parity : EVEN (CIS if you have QTPI, from Jonathan Hudson)
Bits : 7 (if no bit option to set, ignore this)
Stop bits : 1 (if no stop bit option to set, ignore this)
Baud : 2400 (works for most connections, please check)

After having your program call the CompuServe number, you will get a connect message and a prompt. If you are calling a CompuServe number directly, you need to enter a CTRL 'C'. Since you usually use CTRL 'C' to switch between programs on your QL, this won't always work. QTPI and QEM allow you to set the program switching keys to other options such as SHIFT CTRL 'C'. Do this and then CTRL 'C' will work fine.

If you can't send CTRL 'C' from your modem program, press 'ENTER' a few times until you get the prompt 'HOST NAME'. Then type CIS 'ENTER'. If you are using another network for access, follow it's specific directions instead.

At this point, CompuServe will prompt you for your user number and then password. If this is your first time, it will then prompt you for different types of information it needs to better serve you.

Once done with answering the questions, go for it. CompuServe is menu driven and even has help online (again, check your CompuServe manual). Caution about using help outside of the BASIC services, you are being charged for it. If all else fails and you get lost, it may be best to graciously log off (type in BYE 'ENTER') and grab your manual. Then, armed with wisdom and knowledge (we can always hope), get back on there and try it again.

Talking to the World - (CONT'D)

Another suggestion, if you are at a lost and the manual is confusing you or just doesn't have what you are looking for, ask some one. You can always go to the Membership assistance area and leave a question there, or if you are in a forum, leave a message for the Sysop or to 'ALL', so that everyone can read your question and hopefully give you several offers of help. Please also feel free to contact me with QL-Compuserve type questions, or anything else I can help with.

Downloading/Uploading Files

First, if you are NOT using QPTI, there is something you must do. Since most of the file transfer protocols use 8 bits-no parity, and you logged onto Compuserve with 7 bits-EVEN parity, something must be done before trying to download that great game file you want. (QPTI users, rejoice. Jonathan gave you the CIS parity option that handles this automatically for you. So ignore this parity discussion and be happy).

My recommendation, since not all programs let you switch settings without logging you off, is to change your normal log on settings. But BEFORE you do, please read this completely. You can tell Compuserve what settings to use for your account. Follow the menus through Member Assistance to Membership Changes to Change Equipment/Display Profile. At this point choose the Terminal type/parameters option and tell it that you want to change your permanent settings for PARITY. Change it to NONE.

This sets the bit count to 8, no parity, just like you need it for downloading files. You might get some strange characters on your screen as you are still using 7 bit-EVEN parity from you QL. However, you can usually read it without too much problem. Follow the prompts to save the changes.

When the changes have been saved, gracefully log off (BYE) and change your modem program so that it is also NO parity (some programs use Zero instead of No) and set the bits to 8 if you have that option. Save your changes and log back in.

What you should see is a mess on the screen - DON'T PANIC. This is normal since Compuserve always starts as 7 bit-EVEN parity. Everything will be okay shortly. Since you know what Compuserve is asking, answer (ignore what the screen says). If you used 'ENTER' to get a response, the first prompt is actually 'HOST NAME' so type in CIS 'ENTER'. Now (or if you used CTRL 'C') the prompt is for your user number. Again, ignoring the screen, type in your number and hit 'ENTER'. If you typed it in properly, everything should now be normal and you will be able to clearly read the prompt for your password.

Wow, so now you know just one more reason why you should go set yourself up with the pointer environment and QTPI. And QTPI owners, if you are still with us, aren't you feeling a bit smug?

Now, for everyone, to upload or download a file, you need to pick a protocol. If your program does not support Compuserve's 'B' protocol (most don't), your most efficient option will be Y Modem. If your program does not support that one try the X Modem protocol (preferably with 1K blocks and CRC checking on).

When you are at a point to download (or upload) a file, Compuserve will usually prompt you for the protocol to use. Follow the prompts and when it says to start the transfer, tell your program to start the transfer. If you have everything set right, all should go well (again, sorry but see your program manual for more info).

Talking to the World - (CONT'D)

Just a short plug - try uploading sometimes (uploading files is free within most Compuserve forums). The way the Forum libraries get so good is people upload their favorite programs that they wrote (please don't upload anyone else's without their consent). Not to mention the bit of fame and glory or at least recognition. Don't forget to include instructions. Remember, other users did not write it. I will also recommend that you compress the file before uploading.

Speaking of compression of files. Many of the files in the Club forum are compressed as a '*.zip' file. You can decompress these easily by getting the 'unzip2' program from the CLUB FORUM library. This version of UNZIP will restore the proper QL header.

A Minor Clarification

There is a difference between MAIL and forum messages. Mail is normally referred to as EMAIL elsewhere. It is send direct to a person or list of persons. It is not open to public view (note that you should never send anything confidential over most networks, security is limited!). Mail can be send to anyone on Compuserve or for a small fee out to Internet, MCI mail, or even as a hard copy.

Messages on the other hand are restricted to the forum they are in. They are also open for everyone to read unless you mark them private. This is usually a good thing as you never know who else might have something to add. And you also get to meet all kinds of new people that way.

Time and Cost Savings

Obviously, it is a good idea to keep time on Compuserve (or any network for that matter) to a minimum, no matter how cheap it is to access in your location. So following are a few tips (some more obvious than others) to help you save time and money.

Practice Forum - Under the basic services and membership assistance, there is a practice forum. Spend some time there getting used to everything. Try doing some messages and maybe a download or two. The practice forum is part of the basic services and therefor you can spend as much time as you want without racking up the bills as you learn the Forums.

Baud rates - when you are just exploring around, remember that the slowest denominator is your reading and not the modem. So use the less expensive 2400 baud for general searching, especially when in extended services. When you get ready to download/upload files or messages, log back on at 9600 or 14400 baud. Rates are double that of 2400 but your speed is usually x4 or better, amounting to less time and cost online.

Reading off line - as you get into it, you will probably find yourself reading messages in forums. If you read them online, it costs you. Try setting your program to ASCII capture, setting the forum options to scroll messages without stopping, and then logging off when done. Read the messages at your leisure (not to mention you now have a disk copy and are not tying up the phone line).

Ram disk - if you have enough memory on your system, download and upload all files (including ASCII captures) to ram disk. This is definitely faster than most floppy or hard disks. Just don't forget to copy them to regular disks before you shut down.

Customizing - There are several options in Compuserve to customize it to fit your needs. You can simplify your menus, make your own custom start up menu, or eliminate most menus.

Talking to the World - (CONT'D)

You can also set the screen to scroll without making you do an 'ENTER' every time a new page is completed. For this one, you can use CTRL keys to pause the screen if you need to. Special offers - many of the data base companies make special offers to help you become acquainted with them. While you will still acquire extended services time charges, you can often save a lot of money that they would normally charge for their services. Read the bulletins which are shown whenever you log in for these and other special offers. Also check out the Electronic Mall. They have sales and contests all the time!

File Finders - take advantage of wild cards and categories when searching a forum library. Also, for many types of files, CompuServe offers file finders that search many forums. This is an extended service, but it is much faster than hand searching the forums.

And now the finish (for now)...

One final item... in May I am expecting to finish a CompuServe message reader which will make it easier to read the messages that you can capture from CompuServe. As soon as it is finished, I will post it on CompuServe in the Club Forum and put out a message to ALL.

Hopefully this article has gotten you excited about this superhighway thing. If so, I hope to hear from you on CompuServe, Internet, or QBOX USA. Feel free to let me know if I can be of any help (if things fail before you even get online, contact me through IQLR). Even better yet, let me hear of any new discoveries that you might have made out there!

CompuServe Number : 72567,3624
Internet Number : 72567.3624@compuserve.com
QBOX USA name : james hunkins

Sinclair Internet Resources List

Huber Heights, Ohio, USA - Tim Swenson

Recently the mass media has discovered the Internet. News reports about the Internet, both broadcast and print, are becoming more popular. More and more books are being written about exploring the Internet. Your local library should have at least a few.

Since my introduction to the Internet some 5 years ago, I've kept an eye out for Sinclair persons and resources on the Internet. Now seems the time to put them down and distribute them.

If you are not familiar with any of the terms below, instead of my trying to explain them, I suggest you find a good book on the Internet at your local library and look up the terms in it. The explanations in those books are far better than mine.

MAILING LISTS

QL Mailing List
Guiseppe Zanetti (beppe@alessia.dei.unipd.it)
This mailing list is for QLer's only.

QL Hacker's Journal Mailing List
Tim Swenson (swensotc@ssl.sews.wpafb.af.mil)
This mailing list is for readers of the QHJ. It is similar to the QL mailing list.

Sinclair Internet Resources List - (CONT'D)

NEWSGROUPS

On USENET, there is one primary newsgroup for all Sinclair computers. It is comp.sys.sinclair. This group has only just recently been created. Before that other newsgroups were used. The most commonly used groups were: comp.sys.misc, comp.sys.68k, comp.sys.68k.pc.

FTP SITES

General Sinclair files

wuarchive.wustl.edu (128.252.135.4) /systems/sinclair

Has files for Spectrum, QL, and Z88. /pub/msdos/emulators ZX81, TS1000, and Spectrum Emulators.

QL Files

garbo.uwasa.fi (128.214.87.1) /pub/QL

This site only allows ASCII files, no executables.

maya.dei.unipd.it /pub/pub/sinclair_QL

This site allows binary's. Most are compressed with zoo.

GOPHER SITES

gopher.nvg.unit.no (129.241.163.231)

QL Hacker's Journal

Spectrum Frequently-Asked-Questions (FAQ)

MAIL TO COMMERCIAL PROVIDERS

CompuServe

To CompuServe: user = 7777,777

7777.777@compuserve.com

To Internet: user@host.org.domain >internet: user@host.org.domain

GEnie

To GEnie: user = j.public10j.public10@genie.geis.com

More and more commercial service providers are creating gateways to the Internet. One commercial provider, Delphi is specifically an Internet service provider. It is bound to be one of the biggest commercial providers that focuses on the Internet. To know if your commercial provider has an Internet gateway, just ask them.

CORRECTION

In our last issue (Vol. 3 Issue 6) in the INTERNATIONAL QL NEWS article referring to the launch of Miracle Systems SUPER GOLD CARD, somehow we printed that the SGC contained 4M of 16 bit RAM, of course this is in error, the 4M of RAM is actually the fast 32 bit variety.

An Author's Response

Trowbridge, Wilts., Great Britain - Barry J. Ansell

The recent review of QINDEX (Vol. 3 Issue 6) contains some errors, possibly due to not understanding the manual properly - and for the record, I would like to make a few corrective and/or explanatory comments:-

Firstly, the two programs supplied are not, as Gary states, for those with or without the pointer environment already running, but are for those users who do or do not have the QLiberator runtimes available.

(Editor's Note: The error is understandable in North America, the pointer environment is just catching on here and QLiberator being often connected to the PE is not well known and many users would not have the slightest idea as to what the QLiberator runtimes were, other than making the connection (seen often in print) that they have to do with the PE.)

I do not fully understand Gary's problem with the directory selection. In most cases, it will not be necessary to press F2, since the device name and number may be amended (if needed) by direct selection. Also, the initial directory shown whenever the FILE SELECT menu is presented will always be the directory that the user has configured into QINDEX. If MDV2 is being shown, then this can only be because MDV2 has been deliberately chosen as the default device for the program. In which case, the program is behaving correctly! The program can also be configured, by the user, to specify the maximum number of lines to be allowed for the input text file. The number 1024 mentioned by Gary is the supplied default value. The true maximum is the highest number that the QL can handle divided by 6, but in practice will be limited by the memory available. In any case, the number of lines may be amended at runtime if the input file proves to be too large for the configured value. So, from a practical viewpoint, there is no definitive limit to the size of the input file. But any serious author will have split a large masterpiece into a number of smaller files, if only for operational safety reasons or speed of loading into his/her favourite editor! 1024 is considered to be a practical starting point for the majority of applications.

Finally, Gary made the point that index entries are limited to a maximum of twenty characters. This decision was taken to ensure a reasonable presentation of the formatted index, allowing for the use of both single and double columns. Space has to be allowed for margins, the entry text, references and a reasonable clearance between a long entry and its reference(s). An allowance must also be made, when necessary, for the gap between columns. The sizes of most of these parameters are calculated at format time, but something somewhere has to be fixed! I chose the length of the entry - mainly because this is the first item to be entered! It should also be said that an index is a GUIDE to the contents of the document and not a PRECIS of its text. That said, if there is a sufficient demand for longer entries, I would be more than happy to amend the program, but presentation may have to be compromised! The choice shall be with the USER.

The most worrying point reported by Gary was the suicidal reaction of the program when he tried to make an entry containing more than twenty characters - the program is designed to issue a suitable warning and then cancel the entry (NOT itself). There have not been any other reports of such a calamity and I have met with abject failure in trying to recreate Gary's problem. If Gary would send me exact details of what he was doing, I shall do my best to investigate and correct any malfunction.

J. D. HANNAM, Inc.

"North America's Largest Full Line TEAC Distributor"

350 E. Orangethorpe Ave. Unit #24 Placentia, CA 92670 USA



3.5" TEAC FLOPPY DISK DRIVE

SPECIAL !!

1.44 Meg. DRIVES	(HD)	\$ 36.00	ea.
3.2 Meg. DRIVES	(ED)	\$ 79.00	ea.

(For BLACK faceplates add \$2.00 per drive. Prices DO NOT include shipping).

COMING SOON

TEAC'S Line of IDE Hard DISK Drives for use with the soon to be released "QUBIDE" IDE interface for the QL.

We ship worldwide, please specify shipping method, POST or UPS.

TELEPHONE: 800 228 0308

FAX: 714 961 0491

? MINERVA BUG ?

Oak Ridge, Tennessee, USA - Mel LaVerne

On occasion, I attempt to translate a program, written as "spaghetti code" in one of the several primitive Basics, into SuperBasic. Where the author has left little or no room between lines, it becomes necessary to renumber the program in order to get some working room. In the course of one such attempt, I encountered an interesting feature (read that, "bug") in Minerva's handling of GO TO and GO SUB.

The following bit of Basic will illustrate the phenomenon. I realize that the sample doesn't really do anything but it does preserve the essential structure of the original.

```
2 a$ = INKEY$(-1)
3 IF a$ == "Y" THEN GO TO 10
4 IF a$ == "N" THEN GO TO 6
5 GO TO 2
6 REMark
7 a$ = INKEY$(-1)
8 IF a$ == "R" THEN GO TO 10
9 GO TO 6
10 REMark
```

A simple RENUM applied to the above "program" yields the following:

```
100 a$ = INKEY$(-1)
110 IF a$ == "Y" THEN GO TO -80
120 IF a$ == "N" THEN GO TO -40
130 GO TO 100
140 REMark
150 a$ = INKEY$(-1)
160 IF a$ == "R" THEN GO TO -80
170 GO TO -40
180 REMark
```

I verified that RENUM and its default equivalent, RENUM; 100, 10 gave the same (wrong !) result. I then tried RENUM;2, speculating that leaving the starting number alone might give correct results. As it turned out, the speculation was irrelevant, but I did get correct numbering, both on lines and on GO TOs.

At this point, it was obvious that for some m between 2 and 99, RENUM; m will succeed and RENUM;m+1 will fail. With interval bisection, m was fairly quickly found to be 27, i.e., RENUM;27 works but RENUM;28 fails (as do all larger m).

Because the above results were obtained with the default line increment, 10, the question naturally arose as to the effect of changing said increment. That is, for what values of m and n does RENUM; m,n yield valid results ?

Starting from the known good pair (m,n) = (27,10), I decreased n by one and increased m until renumbering failed. Continuing this process, I found that a pattern soon emerged: every time n decreased by one, the maximum valid m increased by ten, i.e., $m + 10*n$ was constant. As can be seen easily, the constant is 127. The answer to the question in the preceding paragraph is, then, any m and n for which $m + 10*n \leq 127$.

? MINERVA BUG ? - (CONT'D)

I must emphasize that these results are not universal. For instance, the following snippet of Basic is freely renumberable with no problems. (I know, it doesn't do anything, either.)

```
2 GO TO 5
3 REMark
4 REMark
5 GO TO 2
```

GO SUB is affected similarly to GO TO and, although I haven't tested them, I would suspect that On ... GO TO and ON ... GO SUB are also vulnerable.

Why do I point the finger of suspicion at Minerva ? Easy; Trump Card + JSU passes; Gold Card + JSU passes; Gold Card + Minerva fails. Why does it happen ? I don't know. Perhaps Lau or some other of Those Awfully Nice People at the QView International Mega Corporation could tell us ??

SEE YOU AT: Miracle in Newport II

QBOX-USA



810-254-9878

A new high-speed modem
is now online that
supports connect speeds
of up to 14,400 baud



QBox-USA is a BBS set up by QL enthusiasts for QL enthusiasts. The system runs entirely on a Sinclair QL. We maintain a link (FidoNet) with European BBS's that carry QL related message areas. With QBox-USA North American QL users can keep in touch with our fellow QL users in Europe and keep up with the latest developments for the QL and QDOS.

We are currently carrying the following message areas:

INTERNATIONAL QL, MINERVA, QUANTA and QBOX.

There are also file areas that contain many programs available for download. Just a few of the files available are: QTPI, QFAX, Zip/Unzip, QLterm, QIGIF and many more! There is no charge to use QBox-USA other than normal phone call charges. Please give QBox-USA a try!

We look forward to your call!

produced using Page Designer 3

CUESHELL

Version 1.12

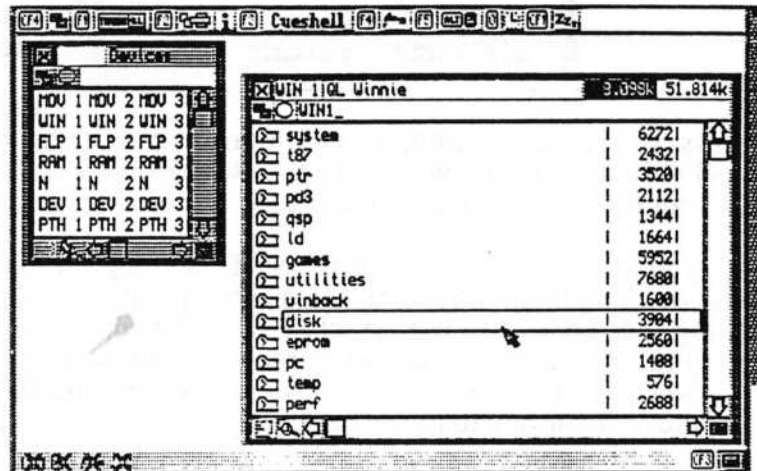
Troy, Michigan, USA - Don Waltermann



Cueshell bills itself as the 'Desktop Program'. I have found it a very useful complement to QPAC2. As I'm still finding new ways to do things with QPAC2 it is a bit difficult to compare Cueshell directly to QPAC2. There are certain tasks I find easier to do from within Cueshell while other things are better performed from QPAC2. I am finding that Cueshell tends to 'grow' on you. The more you use it, the better the program becomes.

Cueshell is very easy to install. You only need to copy it to your normal boot media. Any configuration can be done from within the program. The modified copy is then saved to the top catalogue window. I found this a bit of a hassle since the subdirectory I store Cueshell in is not my top catalogue window.

Whenever I made changes, I found the configured copy stored in my root directory (win1_). It just meant copying the configured Cueshell program to my win1_system_directory. This was a little irritating since I rarely have the system subdirectory as the top catalogue window. It would have been much more user friendly to me if the save option would have prompted for the file name cueshell would be saved to as many other pointer programs do.



Cueshell exists to make normal housekeeping tasks more intuitive. Cueshell can be used to copy files, execute programs or modify system parameters. Lets look at each of these activities in more detail.

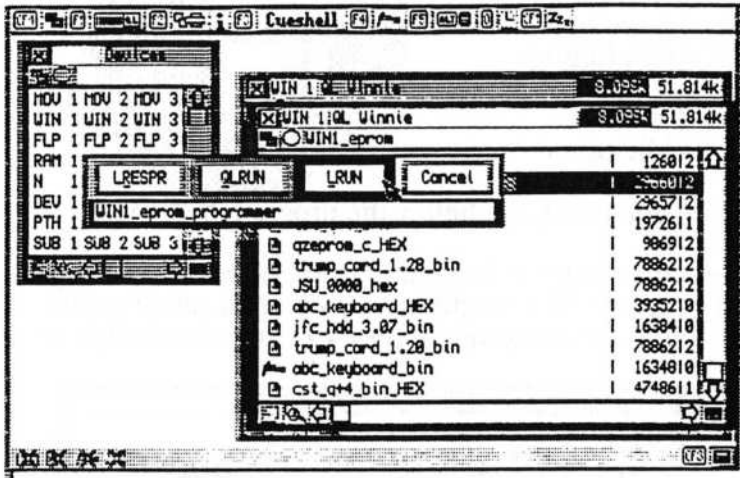
Cueshell really shines when it comes to copying files. I frequently need to copy sub-directories and Cueshell is one of the few programs that can copy everything properly. If a sub-directory needs to be made it just goes ahead and does it as part of the copy. Copies can take the form of updates, moves or deletes. Cueshell uses an animated icon to indicate files moving from one disk to another. The bottom bar of the Cueshell window is the delete bar. To delete just copy to the delete bar.

Another strong point of Cueshell is its ability to intelligently look at a file and help you execute it. For example, if you select a basic program it will give you an option menu that includes the options LRESPR, QLRUN or LRUN. If you select an executable file you will be presented options for Guardian, PSION or OK (to execute the file). At the same time a command string is available. This is a big help when you need to enter parameters to unzip a zip file.

Cueshell provides a set of functions to modify/customise keyboard and mouse behaviour to meet your needs. These include autorepeat delay, autorepeat frequency and choice of character code to use for switching jobs. The mouse parameters include wakeup speed, acceleration and choice of hotkey. The same set of functions also provides a place to set the QL clock.

CUESHELL - (CONT'D)

Cueshell has some novel ways to display files. Selecting the view icon (magnifying glass) presents a window with the file displayed. The welcome change is the ability to toggle

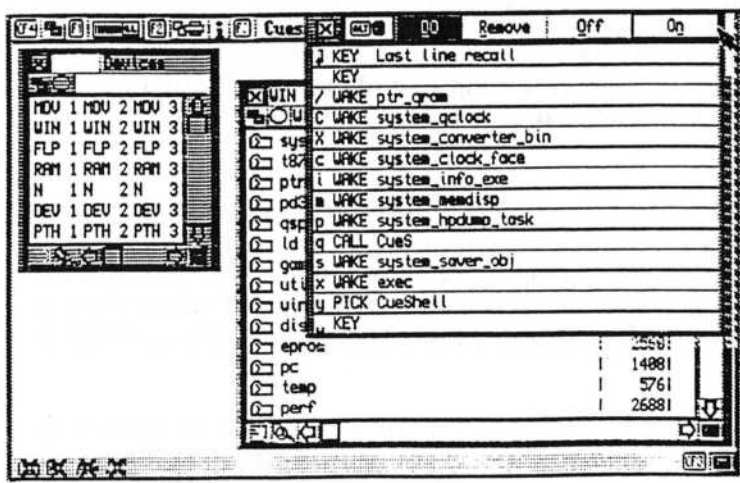


between three modes (normal, neat text and nul-> LF). Selecting nul->LF allows you to read a Quill doc file without having to bother loading Quill at all. This is great to look up that bit of information you need from a readme file. Next to the view icon is the sort icon. You can sort files by name, time, type or size (or any combination). I would have liked to be able to sort so that the executable files were on the top of the list under the subdirectories rather than at the end but that is just my personal preference.

Cueshell allows you to 'shuffle' open windows. If you have a number of windows open under Cueshell, clicking on the Windows Control (F2) icon allows you to pop the window you want on top. This is very similar to the shuffle option available under Motif used on the Unix workstations.

Where you point is important in Cueshell. Moving the pointer to the right of the file name allows you to highlight any item. Moving the pointer over the file name provides new options. Selecting the left mouse button while over the file name puts you into an insert mode that allows you to change file names without having to copy the file. Selecting the left mouse button when the pointer is over the file name activates the proper execute menu (either one to execute a file or one to lrun a basic program).

I was impressed with the manual. Screen dumps are used liberally to illustrate various features. Notes to programmers are mixed in the text where appropriate. A good discussion of the Pointer Environment is included for new users. The back of the manual contains a list of keyboard keys that can be used instead of the mouse.



Other features available in Cueshell include a hotkey menu that provides the ability to DO, remove, turn on or turn off a hotkey. The 'i' icon displays the largest free memory available (in German format with dots where I would expect commas). There also is a jobs menu that allows you to pick, remove or change the priority of jobs running on your QL.

There are a number of functions that I'd like to see incorporated into Cueshell. I haven't found any way to print from Cueshell. I also can't get a shortened file list (file names only).

This is a pain when scanning a large sub-directory.

CUESHELL - (CONT'D)

Cueshell is a program of the quality I've come to expect from Albin Hessler (I am a very satisfied SerMouse user as well). Cueshell is a fine example of what can be done with the Pointer Environment. I look forward to future versions of Cueshell.

Routine Auto-Locator

Oak Ridge, Tennessee, USA - Mel LaVerne

Have you ever, in the course of developing a moderately complex SuperBasic program, found yourself scrolling madly up and down through multitudinous lines in search of the routine that currently needed modification? I have, and it can be annoying, to say the least.

It would be convenient to have a means for automatically updating the line numbers of procedures and functions or even various program entry points as changes are made in the overall program. What we need is a command whose syntax requires a line number. LIST, GO TO, GO SUB, and RESTORE are such commands available in SuperBasic. Unfortunately, LIST nnn does not update as its referent changes. Quite aside from my distaste for GO TO and GO SUB, there can be a sometime problem with their renumbering, as described elsewhere in this issue. We are, then, left with RESTORE.

The following sample procedure is a partial rendering of just such a routine, extracted from a program consisting of the main routine, seventeen procedures and functions, and a set of data.

```
1020 DEFine PROCedure AutoLocate
1030 RESTORE 1140: RESTORE 1540: REMark Main, PROC Set Char
1040 RESTORE 1660: RESTORE 1740: REMark PROC HP_Out, PROC Title
1050 RESTORE 1800: RESTORE 1860: REMark PROC Header, FN Line1_Gen$
. . . . .
1110 RESTORE 3240: RESTORE 3290: REMark PROC Update, DNR_Dat
1120 END DEFine AutoLocate
```

Restricting the RESTOREs to two per line is not necessary but it does allow room for a descriptive REMark indicating the relevance of the given line numbers.

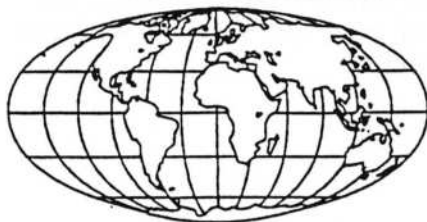
AutoLocate may be placed anywhere in the program; I find that a convenient location is at the very beginning of the program. That way, entry into the editor brings up AutoLocate initially.

Initializing the autolocator is quite simple: with at least some of your routines in place, enter the RESTOREs, using current line numbers. Then do a "RENUM; m,n", where m and n are your choice.

Updating is equally simple. Insertion or deletion of a few lines here or there requires only the appropriate renumber command. A new routine, of course, will require a new reference in the autolocator, followed by renumbering. It is not necessary, but I find it convenient, to keep the references in numerical order.

If you delete a routine but do not delete the corresponding reference in AutoLocate, don't be surprised at the resulting oddities. The line number for the deleted routine will be set to that for the immediately following routine, if any. If there is no next routine, QDOS will set the reference to 32767, indicating that you've tried to change a non-existent line number. To avoid confusion, a bit of tidying up seems in order.

INTERNATIONAL QL NEWS



This column is designed to bring together new and/or changing developments within the QDOS community. The information contained here has been reported to IQLR by individuals and/or suppliers who desire to keep you informed as to their recent activities.

ERGON DEVELOPMENT - Reggio Emilia, Italy

Has announced that Mechanical Affinity is now North American distributor for their entire line of software.

The ERGON DEMO DISK is now at version 5.2 and no longer contains the Spectrum emulators, they can be found on the Zx/eMulator demo disk. Both demo disks are reported to be compatible with QXL, SGC, QVME and other QDOS compatible systems.

JOCHEN MERZ SOFTWARE - Duisburg, Germany

Jochen Merz has finally married his QD (PE compatible) Editor with Liberation Software's QLiberator (PE compatible) Compiler, by way of his QBASIC interface and parser. Owners of QD (version 5 or 6) who also own QLiberator only need QBASIC. Please note Jochen's advert elsewhere in this issue for pricing on the complete QBASIC package and/or upgrades you might require.

The QVME QL Emulator for ATARI Mega STE and ATARI TT has been reduced to only DM 549. The current software supports all three serial ports of the Mega STE with split baud rates and split buffering on all three ports and all three support standard baud rates up to 19200 baud, in addition the third serial port also supports 38400 and 57600 baud!

DILWYN JONES COMPUTING - Bangor, Gwynedd, Great Britain

DJC has released a rash of software updates and/or revisions including NEW facilities added to PAGE DESIGNER 3 (now at version 1.12) requested by early users of PD3. They include the facility to zoom in when editing by a factor of 5, a facility to invert page colours and an additional option called Overstrike has been added to the print menu, allowing non-offset multiple pass printing. These are but a few of the enhancements to be found in PD3 version 1.12.

Version 13 of DJC's ADDRESS BOOK and LABEL PRINTER program is now available and includes a birthdays facility to allow you to add dates of birth to lists of names and addresses and to select entries on the basis of month or even between given dates in that month. Another change allows the printing of blank lines between entries listed in "full page width" mode.

To take advantage of the recent explosion of memory expansion (Gold Card - Super Gold Card) the 1994 revision of FILEMASTER, written by Joe Haftke, will now manipulate selections of up to 288 files (subject to free memory), twice the limit of the original 1991 FILEMASTER.

INTERNATIONAL QL NEWS - (CONT'D)

SOFTWARE87 - London, Great Britain

Fred Toussi of Software87 is now delivering version two of PUBLISHERS PACK for use with Linedesign 2. Fred also states that work continues on his Laser Printer Drivers for Text87 Plus4.

DI-REN - Walsall, West Midlands, Great Britain

Robin Barker announces the range of new products to be referred to as the AMADEUS INTERLINK. Amadeus is essentially a network system designed to cope with up to 255 connected devices, including virtually any I/O interface and other computers.

(Editor's Note: The "Amadeus Interlink" as it applies to the QL is too big of a development to properly cover in this column. For additional information see Robin's article elsewhere in this issue.)

COMPUTER TECHNIK - Oschelbronn, Germany

Jurgen Falkenberg/Computer Technik has recently moved their operations. Their new address and telephone number is as follows: COMPUTER TECHNIK - Parkstrasse 25, D-75223 Oschelbronn, Germany. Tel: 07233 81515

PROGS - Veltem, Belgium

Joachim and Nathan have launched THREE new programs that take advantage of PROforma their programmers "C" (C68) library.

PFdata can be used to create hardcopy of DATAdesign files. PFlist is an easy to use program to create listings on any printer but, especially inkjet and laser printers. PFB2pff is a program that gives you access to a large variety of fonts, it also allows you to convert Adobe Type 1 _pfb fonts to PROforma. Please note their advert elsewhere in this issue.

IQLR - Newport, Rhode Island, USA

We are pleased to announce that Bob Madaris of Trafford, Alabama, USA has painstakingly produced an Index of all three volumes of IQLR. The Index is available from IQLR, just post a formatted 3.5" disk and enough \$, £ or DM to cover return postage.

We would also like to inform our readers that individual back issues for IQLR volumes 1 through 3 are no longer available. We do have a limited supply of bound volume 1 and volume 2 Collector's editions available.

Three ring 1.5" vinyl binders for volume 4 are available in limited quantities, for additional information and pricing please contact our North American office.

NEW SOFTWARE FROM BELGIUM

PFdata

Very interesting program for all DATAdesign owners. This program can create hardcopy of your DATAdesign files using PROforma. This means that you can use a large selection of fonts (as the ones included in LINEdesign), in any requested size. Also LINEdesign pictures can be included to add logo's, boxes etc. Several records can be printed on each page, several options for justification etc.

PFlist

Very easy to use program to create listings on any printer (especially inkjet and laser printers). Can include a footer with filename and filedate. Always allows perforation of your pages. The font and fontsize can be chosen (PFlist uses PROforma). PFlist can create your listing in two columns, and landscape (or both).

pfb2pff

This program gives you access to a large variety of fonts for PROforma, LINEdesign, PFdata, PFlist,... It allows you to convert Adobe Type 1 .pfb fonts to PROforma.

Atari SLM804 laser printer driver for PROforma

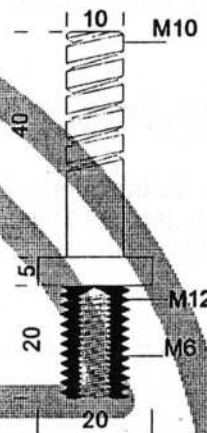
Epson ESC/P2 printer driver, running project, write for details

fax driver for PROforma, running project, write for details

AND OUR ALL TIME FAVORITES

LINEdesign

Our definitive favorite. LINEdesign is a very powerful vector drawing program. It is very userfriendly and can be used by everybody (as long as you have access to a QL or compatible computer). It includes many fonts and clipart drawings. LINEdesign can create pictures which can be reproduced on any printer, and at any size, with the same result (resolution permitting). LINEdesign is very flexible. It can be used for artistic drawing, technical drawing, creating adverts (like this one), leaflets, fliers... LINEdesign can even do some desktop publishing. If you want high quality output, then LINEdesign is the program for you! LINEdesign allows you to create pages with text, lines, curves, rectangles (with rounded corners), pies, bitmaps... These can all be scaled, rotated, slanted, moved without degeneration. LINEdesign is delivered with an extensive manual including a printout of all fonts and clipart.



PROforma

The graphics library which we developed for LINEdesign. This library can be used by C programmers, and gives you access to all drawing commands and printer drivers which are used by LINEdesign, PFdata and PFlist, and even more !!

DATAdesign

A very userfriendly database which is powerful and fast. The userfriendliness of this program is quite amazing. Can be used for all you database requirements.

DATAdesign API

Unleash the real power of DATAdesign. The API gives programmers direct access to the DATAdesign database management system. It offers you a record at a time data manipulation language which can be used from SuperBasic, C and Assembler. When you access the DATAdesign engine directly, DATAdesign suddenly turns into a fully relational database with an extra, as all records can always be referenced in a unique way. DATAdesign and the API allow you to use variable length fields. Fields can be added or deleted without problems. Files can be accessed by several jobs at the same time etc.

for more information, just write, phone or fax !!
Haachtstraat 92, 3020 Veltem, Belgium, tel/fax (016) 48 89 52

PFdata BEF 2000 (1760), PFlist BEF 2000 (1760), pfb2pff BEF 3000 (2700), SLM804 driver BEF 1000 (930), LINEdesign BEF 5000 (4350), PROforma BEF 5000 (4350), DATAdesign BEF 3000 (2700), DATAdesign API BEF 1000 (930). Prices in brackets for customers outside European Community. Payment terms : postage is included, send a EuroCheque in BEF, or your VISA / EuroCard / MasterCard number and expiry date. For upgrades, inquire !

NEW Telephone/Fax
0494 871319

(EEC) *W.N. Richardson & Co.*

SINCLAIR QL PRICE LIST
APRIL '94

» » 6 Ravensmead
Chalfont-St-Peter
Buckinghamshire, SL9 0NB

S.A.E. for further information of hard disk, floppy disks,
Falkenburg products and spares

BACKUP QL WITH P.S.U. JS ROM - £80
JM ROM - £70
PART EXCHANGE ALLOWANCE - £15

Accessories

* **NOTE: EXTERNAL (SER2) 3 BUTTON MOUSE AND SOFTWARE** *

PC KEYBOARD INTERFACE, for INTERNAL FITTING, with lead to 102 KEY KEYBOARD £ 75.00
 PC KEYBOARD, UK version, 102 key (AT) **REDUCED PRICES** £ 25.00 ~~£ 30.00~~
 PC KEYBOARD INTERFACE and KEYBOARD **REDUCED PRICES** £ 95.00 ~~£ 99.00~~
 CASE and LEAD for EXTERNAL FITTING of Keyboard Interface for simpler assembly £ 14.00

* **SER MOUSE, 3 Button, Software controlled, with operating and formatting disks, externally mounted, fits in SER2** £ 40.00

TANDATA MODEMS **1Mb, 2Mb and 4Mb** **AGAIN IN STOCK**

ECONOMY MULTI-COMPUTER FLOPPY DISK DRIVE
NB: 4MB DRIVES NEED GOLD CARD OR SUPER GOLD CARD

ECONOMY DRIVE PRICES

CAPACITY:	1Mb DS/DD	2Mb DS/HD	4Mb DS/EHD
SINGLE DRIVE	£69	£85	£120
TWIN DRIVES	£99	£150	£199
10 VERBATIM DISKS	£5	£8	£35

TELEPHONE RE: UPDATING EXISTING DRIVES. ALSO DETAILS OF HARD DISK DRIVES.

Monitors

9" NEC GREEN SCREEN MONO (2ND USER) £30
PLEASE ENQUIRE FOR COLOUR MONITORS

Microdrive Cartridges and Spares

4 New Cartridges in a wallet £ 10.00 8 prog carts for reformatting in 2 wallets £ 15.00
 Plastic Storage filing box including 20 new cartridges £ 45.00
 QL Psion Software V2.35 Includes Quill, Abacus, Archive, and Easel IN WALLET £ 18.00
 QL Psion Software Separate programs £ 10.00
 QL power Supply Unit £ 10.00 QL Printer I/F £27 Membrane (and instructions) £ 9.00
 TV or Network leads £ 3.00 QL Top & Bottom Case £ 5.00
 IC's ZX 8301 £ 9.00 ZX 8302 £ 3.00 8049 (IPC) £ 3.00 MC 1377 £ 3.00

QL SERVICE MANUAL & CIRCUITS £25.00 **S.A.E. FOR FURTHER DETAILS**

U.S. AND NON-E.C. POST FREE



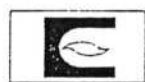
Payment terms:
CWO, Access, VISA et cetera
Cheques - allow 10 days

Delivery:
Carriage - £9
Postage - £5



Product subject to availability, E&OE.
TEL/FAX: 0494-87-1319

MOBILE:
0850 597650



CONCORDE

Upton, Oxfordshire, UNITED KINGDOM - Graham Thwaites

In the December 93 issue of IQLR (vol. 3 issue 4) Bill Cable describes a group of programs for building a word index of a text file using the facilities of Archive. As I have never had occasion to use Archive I found it quite instructive to take a look at the code (together with the odd glance at the relevant section of the QL User Guide). However, my attention was attracted particularly by the comment in Step 4 that "it may take several hours ... to index large text files". As similar functionality can be provided easily in GT-Prolog I thought it might be interesting to make a comparison.

The resulting program exploits a number of features of Prolog in general and GT-Prolog in particular which means that comparatively little code needs to be written. The Prolog database provides a very efficient mechanism for recording and manipulating the index information and the string handling library procedures enable rapid processing of a text file into tokens. Although a menu driven user interface could easily be built using GT-Prolog library procedures this version uses the query shell as this is more illustrative of the workings of the program. The GT-Prolog editor can be used to view the original text file.

The Code:

```
?-autohash(character,8).    %tell system to build large associative table for characters

/* word break characters */

wb($.). wb($,). wb($;). wb($'). wb($?). wb($:). wb($!). wb($@). wb($#). wb($%). wb($^).
wb($&). wb($*). wb($(). wb($)). wb($-). wb($-). wb($+). wb($~). wb($£). wb($\\). wb($|).
wb($|). wb($}). wb($}). wb($}). wb($<). wb($>). wb($/). wb($=). wb($"). wb($ )
wb($r).    % include CR as this is present in the QUILL_lis file

?-autohash(string,8).      %tell system to build large associative table for strings

/* non-significant words */

sk("a").sk("and"). sk("are"). sk("i"). sk("if"). sk("in"). sk("is"). sk("it"). sk("of").
sk("on"). sk("the"). sk("to"). sk("be"). sk("that"). sk("this"). sk("will"). sk("you").

% read a sequence of words - tail recursively

read_words($\26\,):-!.      %eof character so stop
read_words($\10\,N):-!.    %eol character - bump line counter
    N1 is N+1,
    get_char(C),
    read_words(C,N1).

read_words(C,N):-          %ignore leading word separator char
    wb(C),!,
    get_char(D),
    read_words(D,N).

read_words(C,N):-
    read_word(C,L,FollowCh), %L returns a list of characters for the word,
                             %FollowCh is the character following the word
    string_list(S,L),       %convert the list to a string
    (sk(S),!)              %if non-significant word then ignore it
```

CONCORDE - (CONT'D)

```
;   asserta(l(S,N))           %else record spelling and line number in database
),
read_words(FollowCh,N).      %and do the rest of the words

% read a single word

read_word(C,[H|T],FollowCh):-
    C>=$A,C<=$Z,!,           %upper case letter
    Code is C-$A+$a,         %convert to lowercase code (integer)
    int_char(Code,H),        %and then to character type
    get_char(D),
    read_word(D,T,FollowCh).

read_word($\10\,[],$\10\):-!. %eol - terminates the current word
read_word($\26\,[],$\26\):-!. %eof - ditto
read_word(C,[],FollowCh):-
    wb(C),!,                 %word separator - ditto
    get_char(FollowCh).

read_word(C,[C|T],FollowCh):- %acceptable character - add to list
    get_char(D),
    read_word(D,T,FollowCh). %and process rest of word

/* utilities */

outlist([]):-!.              %routine to print a list
outlist([H|T]):-
    write(H),
    write($),
    outlist(T).

/* top-level query goals */

arctolin(File):-
    see(File),                %create an index of all words. File should be a
    abolish(l/2),             %QUILL printer file
    get_char(C),              %select File
    read_words(C,1),          %flush the database of index entries
    seen.                     %read the first character
                                %create the index
                                %close File

words:-
    setof(A,B^l(A,B),L),      %list all words found in alphabetical order
    outlist(L).

line(N):-
    bagof(A,l(A,N),L),        %list all words found on line N in
    reverse(L,L1),           %order of occurrence
    outlist(L1).              %put into correct order

index:-
    setof(A,B^l(A,B),L),      %list all words and occurrences
    member(W,L),              %find all words
    setof(B,l(W,B),L1),       %for each word ...
                                %... find all line numbers (removing duplicates)
```

CONCORDE - (CONT'D)

```
write(W),nl,
  outlist(L1),nl,nl,
  fail.                                %force backtracking to next word index.

index(S,F):-                            %find all words between S and F
  setof(A,(B^l(A,B),A@>=S,A@=<F),L),
  member(W,L),
  setof(B,l(W,B),L1),
  write(W),nl,
  outlist(L1),nl,nl,
  fail.
index(,_).
```

Invocation:

The program is initiated from the Prolog query shell to build an index using arctolin on a printer file generated from QUILL:

```
?- arctolin(flp1_test1_lis).
```

The information recorded can then be listed in a number of ways using the other top level goals:

```
?- words.
?- line(19).                %list the words on line 19
?- index.
?- index("q","qz").        %list all words starting with 'q'
```

The goals can be combined with other Prolog facilities to redirect output to a printer or file:

```
?- tell(flp2_output),index,told.
```

or to list words on a sequence of lines:

```
?- repeat(I,25),write(I),write(" "),line(I),I>=50,!. 
```

The database can also be modified directly, for example to delete words which were omitted from the skip table:

```
?- retractall(l("s",_)).    %delete all 's' (following apostrophes)
```

Performance:

The following timings (minutes:seconds) were taken using the system clock on a standard 16Mhz Gold Card with 2Mb memory and 3.5 ED drives. GT-Prolog was configured to use 512kb for both data and heap. Windex was run using RAM-disk for all Archive files. The test file is a QUILL document of 458 lines containing 3267 words of which 2469 occurrences are recorded. All listings are to the screen.

CONCORDE - (CONT'D)

	Windex	Concorde
TEXTTOEXP	3:09	*
EXPTOARC	0:17	*
ARCTOLIN (non-printing)	18:37	0:52
list all words found	1:38	1:56
list words on line 19	0:01	0:01
list index of all words	3:54	4:46
list index of s words	0:23	0:08

The heap memory actually used to store the index within GT-Prolog is 80415 bytes although, of course, more is used in processing. This compares with the sizes of the files used by Windex as follows

<u>_exp</u>	23377
<u>_arc</u>	31970
<u>_lin</u>	45056

The differences in speed between the two programs can be explained partly by the different philosophies used in storing the raw index information. Windex creates a sorted file directly - a relatively expensive procedure, whereas Concorde uses Prologs associative database but then requires to sort the results for presentation (a side effect of setof). Nonetheless, the program does demonstrate Prologs power in this type of application in terms of both expression and execution. Other similar problems which I have used Prolog for include compilers and translation utilities. For example, a simple filter program similar to Concorde which extracts register equate statements (user defined register names are not supported by QMAC) from an assembler file and applies these to the remainder of the file and any included files takes about 150 lines of Prolog and runs at between a half and a third of the speed of QMAC - about 4 minutes for 11500 lines.

LAST CALL "Miracle in Newport II"

Why not join many of the Contributors to IQLR, North American and European Suppliers and members of the leading User Groups in celebrating the QL's 10th Birthday at the QL good time referred to as "Miracle in Newport II".

With plenty of accommodations in the area, you can come for the show or stay a few days and fellowship with others who share YOUR interests and hobby.

The show will be held at :

Howard Johnson Motor Lodge (meeting room)
Route 114 Middletown, RI - USA (the main highway into Newport)
14 May 1994 (10:00 am (EDST) - 6:00 pm (EDST))

Pre-registration is \$5.00 US per person (children free) or \$7.00 US at the door. Registration includes the morning after brunch at MOTEL 6 (where many of the participants will be staying). For more information call IQLR : 1 401 849 3805.

QUBBESoft P/D

38, Brunwin Road, Rayne, Bramtree,
Essex. CM7 5BU. Tel/Fax: 0376 347852
24hr - 7 Day Week Service.

PD & Shareware Software

QL Emulator AMIGA V3.21 (3 Disks)	£3.00p
C68 Compiler Runtimes (3 Disks)	£3.00p
C68 Compiler Source Code (2 Disks)	£2.00p
MicroEMACS V3.11 (2 Disks)	£2.00p
GNU Text Utilities (2 Disks)	£2.00p
Adventure93 (2 Disks)	£2.00p
XLisp V2.1d (2 Disks)	£2.00p
SPECIAL 1 Q.A.T.S (pronounced CATS)	£1.00p
SPECIAL 2 Molecular Graphics V5.11	£1.00p
SPECIAL 3 XLisp V1.4a	£1.00p
SPECIAL 4 QPACer (QPAC2 Boot Creator)	£1.00p
SPECIAL 5 'C' Tutorial	£1.00p
SPECIAL 6 Lib QPTR V3.00	£1.00p
SPECIAL 7 Lib CPORT V1.22	£1.00p
SPECIAL 8 QRactal Screens Demo	£1.00p
SPECIAL 9 QL Home Finance	£1.00p
SPECIAL 10 ZM1+ SPECTRUM Emulator	£1.00p
SPECIAL 11 Lib CURSES V1.01	£1.00p
SPECIAL 12 ELVIS Editor V1.6	£1.00p
SPECIAL 13 Text 'N' Graphix Demo	£1.00p
SPECIAL 14 'C' Prog Tools 1	£1.00p
SPECIAL 15 'C' Debugging Tools	£1.00p
SPECIAL 16 Ergon Development Demo Disk	£1.00p
SPECIAL 17 German to English Wordlist	£1.00p
SPECIAL 18 QDesign Demo	£1.00p
SPECIAL 19 D.J.Walker Demo Disk	£1.00p
SPECIAL 20 DBAS Database Package	£1.00p
SPECIAL 21 FTC II Demo	£1.00p
SPECIAL 22 QL Hard Disk	£1.00p
SPECIAL 23 PSION Xchange	£1.00p
SPECIAL 24 SPECULATOR '93	£1.00p
SPECIAL 25 QLIPER Disk	£1.00p

PD Disks 1 to 14

£1.00p each

(Each PD Disk contains 10 programs and a Menu. Each Disk contains a BOOT program that RUNS the Menu. Each program RUNS from the Menu unless otherwise stated.)

QITALY Disk Magazine Issue 15 to 25

£1.00p each

(Each Disk contains 1 Issue of the QITALY Magazine.)

All prices include medium but not P&P. Please refer to P&P guide below. Disks are 3.5in DS/DD.

P&P Guide for PD & Shareware

Qty	UK	Euro	Z1	Z2	Qty	UK	Euro	Z1	Z2
	£ p	£ p	£ p	£ p		£ p	£ p	£ p	£ p
1-3	0.50	1.00	1.50	1.75	10-12	1.25	2.50	3.00	3.25
4-6	0.75	1.50	2.00	2.25	13-15	1.50	3.00	3.50	3.75
7-9	1.00	2.00	2.50	2.75	16-18	1.75	3.50	4.00	4.25

New Q.L. Hardware

Gold Card: 16MHz 68000, 1920K RAM, Battery Backed. Clock, Toolkit 2, Disk Interface, All Trump Card Facilities. Includes A4 Manual.....£225.00p

QEP 3 EPROM Programmer: Will program 2716 -> 27512 5V MOS & CMOS Eproms. Built in Software. Includes A5 Manual.....£120.00p

Trump Card: 768K RAM, Toolkit 2, Disk Interface, Dynamic RAM Disk, Printer Buffer. Includes A4 Manual.....£95.00p

ExpandRAM 512: 512K RAM with through port to connect other peripherals i.e. Disk Interface, Eprom Board.....£45.00p

ExpandRAM 0: 0K RAM, as above except User supplies RAM chips (8=256K 16=512K).....£20.00p

Twin 720K Disk Drives: Fully Cased with internal Power Supply Unit.....£100.00p

Twin 1.44mb Disk Drives: Fully Cased with internal Power Supply Unit.....£150.00p

Twin 3.2mb Disk Drives: Fully Cased with internal Power Supply Unit.....£200.00p

1 Year Warranty on all New Hardware, 2 Year Warranty on Gold Card

Special Package Deal

Gold Card + Twin 3.2mb Disk Drive Unit.....£400.00p

Gold Card + Twin 1.44mb Disk Drive Unit.....£350.00p

Gold Card + Twin 720K Disk Drive Unit.....£310.00p

Trump Card + Twin 720K Disk Drive Unit.....£185.00p

All prices exclude Postage & Packing

2nd User Hardware & Software

Includes Disk Drives, Monitors (Colour & Grn), Memory Expansion, Disk Interfaces, Keyboards & Interfaces, Printers, Leads etc. All types of Commercial Software including Games, Front Ends, Utilities, Languages etc. Back Issues of QLUser/World & QUANTA. A selection of QL related Books also stocked. Blank 3.5in DS/DD & DS/HD Diskettes. S.A.E. or I.R.C. for current Stock List.

New Hardware in Pipeline

Currently working on 2 new products for the QL as follows:-

QUBIDE: IDE Hard Disk Interface. Will allow connection of an IDE Hard Disk upto 120mb to the QL. Software built in. Plugs into QL's ROM slot.

FAST-NET: Vastly improved network, at least 10 times faster than existing QL network. Also allows networking between QL and ATARI ST running QDOS.

Payment Methods

Cheques, (in UK Pounds drawn on UK Bank), Postal Orders, International P.O.'s and Eurocheques (in UK Pounds) payable to.....- QUBBESoft P/D UK Cash is also acceptable.

Catalogue

S.A.E. or International Reply Coupon for latest Issue.

TF SERVICES

MINERVA

The ULTIMATE system upgrade

MINERVA RTC (MKII) + battery for 256 bytes ram, CRASHPROOF clock & I²C bus for interfacing. Can autoboot from battery backed ram. Quick start-up.

OTHER FEATURES COMMON TO ALL VERSIONS

DEBUGGED operating system/ autoboot on reset or power failure/ Multiple Basic/ faster scheduler-graphics (within 10% of Lightning)-string handling/ WHEN ERROR/2nd screen/TRACE/ non-English keyboard drivers/ "warm" fast reset. V1.97 with split OUTPUT baud rates (+ Hermes) & built in Multibasic.

1st upgrade free. Otherwise send £4 (+£6 for manual if reqd) . Send SAE, Minerva + disk or 3 mdvs.

MK1...£41(£40)[£43] RTC(MKII)...£66(£63)[£67]

GOLD CARD (incl SUPER) compatible

HERMES

A replacement QL co-processor for the QLs awful IPC 8049

- Do you get keyboard bounce?
- Do you find fast serial input unreliable?
- Do you want to connect a faxmodem at 19200bps and send and receive FAXES and/or data.

If you can say one YES , then you need HERMES

- 19200bps RELIABLE serial input - NO QCONNECT.
- Independent input baud rates - use serial mouse & print
- Stops keyboard bounce (unwanted repeat chrs)
- Improves 'fuzzy' and 'random' sound
- Provides extra input/output lines
- Key click

To fit, simply replace the QL 8049 or 8749 chip
£26(£24)[£27] incl manual/software

QL SPARES

Faulty QL board (no plug-in chips).....£11(£10)[£16]

Kybd memb £9.50(9)(10.50)	Circuit diags . £3.50(£3)[£4]
68008 cpu ... £8.50(£8)[£11]	1377 PAL £3.50(£3)[£4]
JM ROM...£10.50(£10)(£11)	Power supply £17(£16)[£26]
8302 ULA...£10.50(10)[£11]	surface [£21]
8049 IPC ...£8.50(£7.50)[£9]	8301 ULA £10.50(£10)[£11]

Other components/(sockets etc) please phone

I²C Interfaces

The I²C bus was designed by Philips to simplify interfacing. Minerva MKII clock is driven by an I²C chip, & a connector allows connection of other circuits. Our external circuits will interconnect without leads. Up to 5 interfaces can be powered off the QL - up to 4 of each can be separately addressed from the QL. No soldering required to fit to the QL. High quality cases and labels, with professionally made double sided circuit boards. Interface sends & receives at 100k bps

Parallel Interface gives 16 input/output lines. Can be used for logic level output eg model train controllers. Input direct to motor drivers (eg L293/ L298).....£26(£24)[£27]

Analogue Interface Each gives 8 analogue to digital inputs, and 2 digital/analogue outputs. For temp measurement, sound sampling etc.....£31.50(£29)[£30]

Data sheets. (analogue/parallel chips)....£2.50(£2)[£3]

Control software/manual£2.50 (£2) [£3]

(First interface purchase includes free 15D/9D lead)

QBBS

UKs first QL scrolling Bulletin Board

Megabytes of files. Messages to/from UK/Belgium/ Holland/USA/Germany for a UK phone call.

TANDATA callers add SIX zeros (000000) or wait for 3 seconds of modem tone if dialling manually.

(+44)344-890987 (up to V32bis)

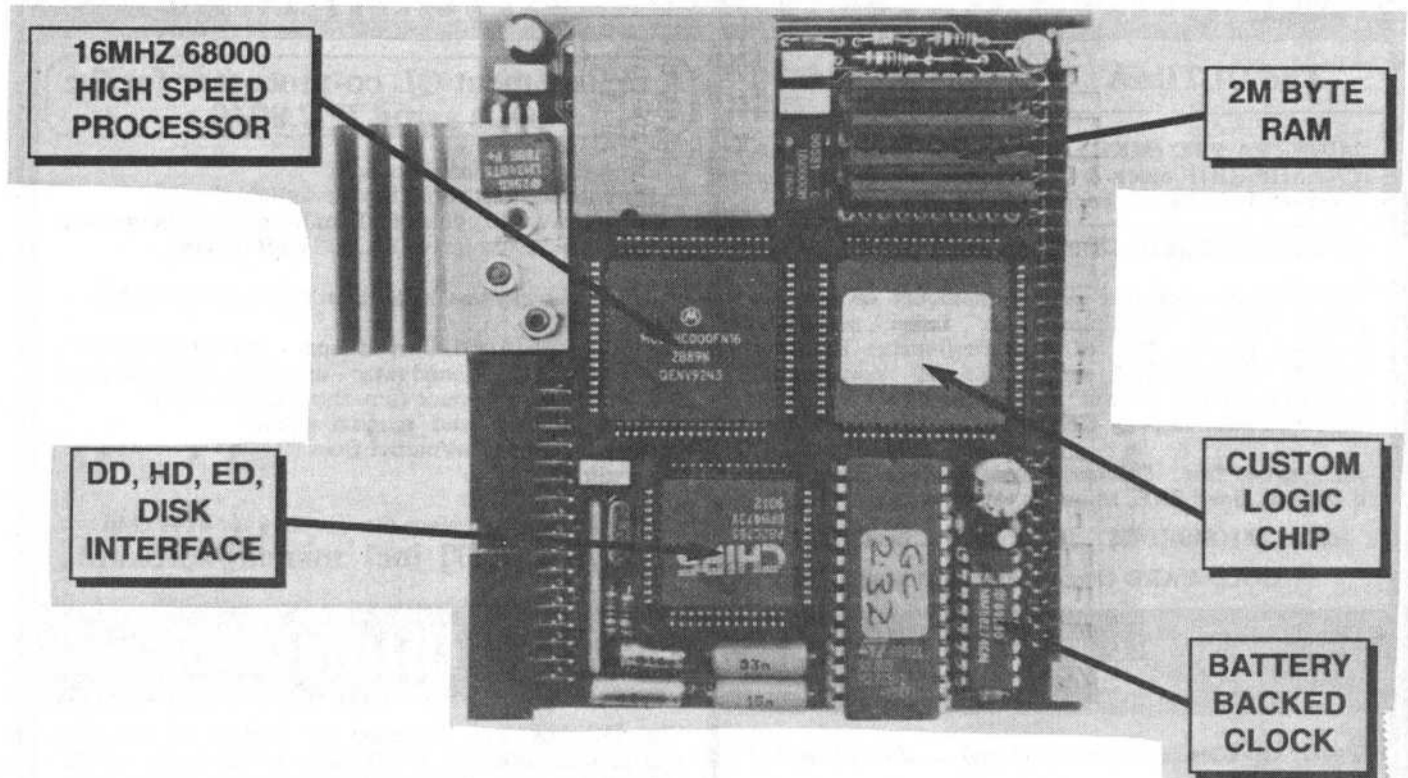
Prices include AIRMAIL post & packing & zero VAT rated outside the EC. Prices are: EC except UK (Europe) [outside Europe]. Ring for UK prices or see QL World/Quanta/QReview. Payment can be by Mastercard/ Visa/Access/Eurocard/£ cheque/UK postal order/money order/bank draft drawn on branch in the UK or CASH!. (NOT Eurocheques due to crazy bank charges - £15!!) MAIL ORDER ONLY - no callers without ringing first. Any customs duty etc customers responsibility. Send IRC for full list and details.

Holly Corner, Priory Road, ASCOT, Berks, SL5 8RL

Tel:(+44)344-890986

Fax & BBS: (+44)344-890987

MIRACLE SYSTEMS



QL GOLD CARD

Recycled Gold Card £150 inc. (£125 outside EC)

This is the expansion that has been revolutionising the QL. It is very easy to fit, it simply plugs into the expansion port at the left hand of the QL, and once fitted it will instantly increase the execution speed of the QL by about 4 times due to the presence of a 16MHz 68000 on board. There is 2M of fast 16 bit RAM of which QDOS sees a contiguous 1920K. The remainder is used for shadowing the QL's ROM and display memory and for the GOLD CARD's own code.

There is a disk interface which can access 3 mechanisms (4 with the DISK ADAPTER) of three different densities, DD (double density, 720K), HD (high density, 1.44M) and ED (extra high density, 3.2M) in any mix. The disk interface connector is the same type that was fitted to the Trump Card so most QL compatible disk drives can be used.

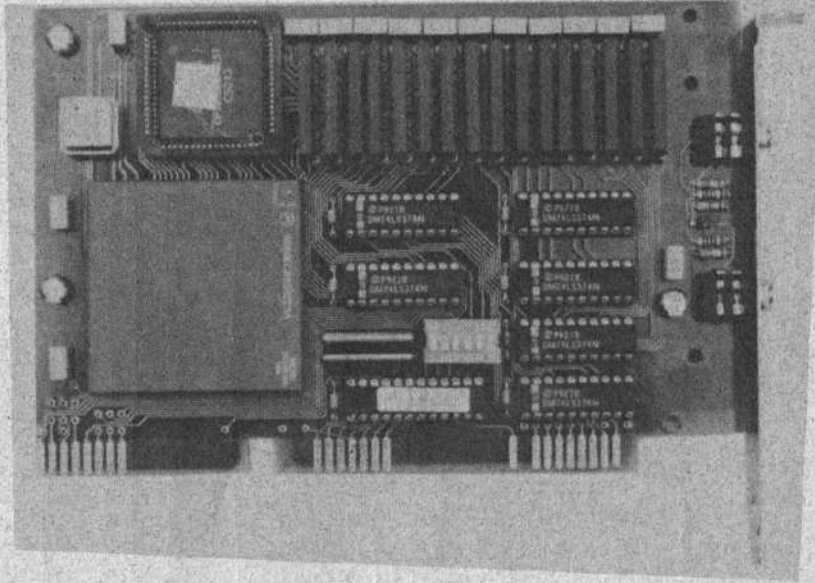
Please note: that DD drives still give a capacity of 720K per diskette.
Our DUAL ED DISK DRIVE allows the GOLD CARD to access DD, HD and ED diskettes.

Another feature is the battery backed clock. When the QL is switched on the contents of the clock are copied into the QL's clock so that the time and date are correct. The firmware in the ROM gives the GOLD CARD all the functionality of the Trump Card like TOOLKIT II and there is a sub-directory system for floppy and RAM disks.

Physically the GOLD CARD is about half the size of the TRUMP CARD and so fits almost all within the QL. Its current consumption is well under allowable maximum so no special power supply is required. The GOLD CARD comes with a 14 day money back guarantee and a 1 year warranty.

MIRACLE SYSTEMS

THE QXL



The QXL turns the common PC into a QL compatible. The package comprises a half card that plugs into an 8 or 16 bit standard ISA slot and a diskette loaded with a QDOS compatible operating system and a SuperBasic compatible interpreter. After installation simply type QXL and the PC will appear to be a QL allowing QL programs to be run from QL format diskettes.

The card itself has a 32 bit 68EC040 processor running at 20MHz which gives a good turn of speed. This processor has access to its own RAM and so performance is virtually independent of the host PC whether it has an 8088 or a Pentium. In fact the PC is used purely as an I/O system giving QL programs access to the PC's floppy disk, hard disk, keyboard, display, serial and parallel ports. The card has QL style network ports to allow connection to a QL network. The minimum PC specification required is an XT with EGA display and a spare standard slot.

Varying RAM sizes from 1M up to 8M can be supplied. The smaller capacities can be upgraded to the larger ones and the cost is simply the price difference. Not all the RAM is available to the user programs; the 1M equates roughly with a Trump Card QL memory size and the 2M with a Gold Card QL.

During the lifetime of the QXL we intend to enhance the software to make use of the new hardware facilities of the PC such as SVGA graphics. As has been our policy in the past we intend to provide software upgrades free of charge.

To order...

Please make cheques payable to MIRACLE SYSTEMS LTD in Pounds Sterling (£) or quote your credit card number and expiry date and post To:

MIRACLE SYSTEMS LTD
25 Broughton Way
Osbaldwick, York YO1 3BG
UK

To place an order by phone, please have your credit card ready. For customers outside the EU we charge the prices shown in brackets.

QXL prices

1M	£295	(£255)
2M	£325	(£280)
5M	£410	(£355)
8M	£495	(£430)



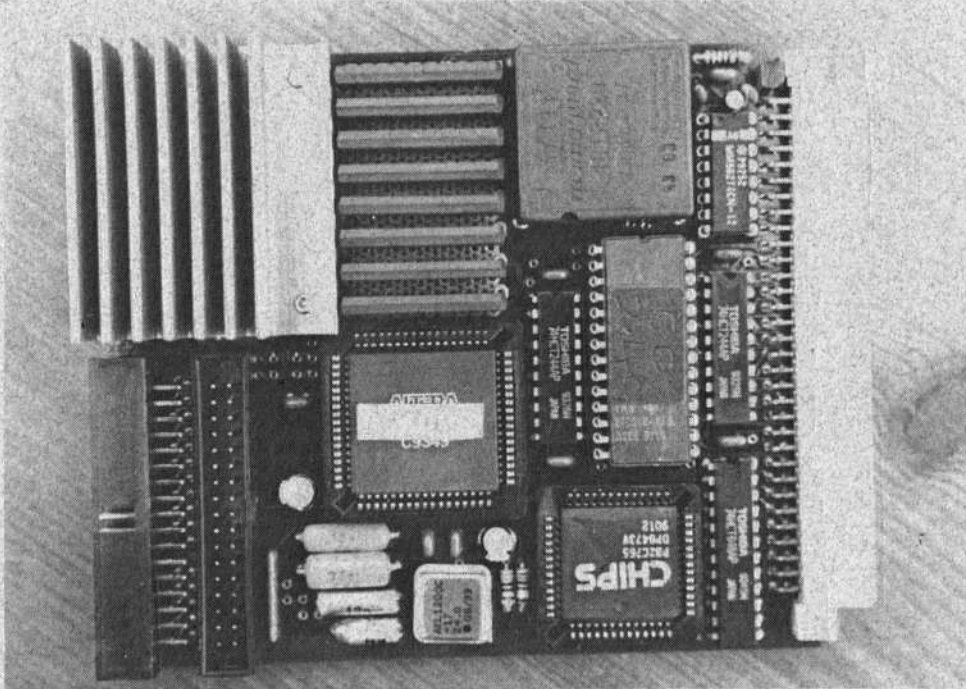
See us and the entire range of Miracle Systems products at the events heralded by the Town Crier elsewhere in this issue.



Tel: (0904) 423986

MIRACLE SYSTEMS

SUPER GOLD CARD



Briefly...

- * 3 Times Faster
- * 68020 processor
- * 4M bytes of RAM
- * CENTRONICS port
- * 2 Disk drive ports
- * 2 Year warranty
- * £ 375 (£ 325)

What is it?

This is the first major revision of our highly successful Gold Card. We have replaced the 68000 with a 68020 so programs run about 3 times faster and have expanded the memory to 4M bytes.

Other improvements include a fast CENTRONICS printer port, 2 double disk drive ports, virtually crash-proof clock and a socket to optionally connect 5V. We also are providing a Centronics printer cable at no additional cost.

The deal...

The price is £ 375 inc. VAT (£ 325 outside EU) which covers postage, 2 year warranty and 14 day money back guarantee. We can upgrade your Gold Card for £ 225 (£ 200 outside EU), or trade in your Trump Card (£ 50), Super Q Board (£ 40), or other memory expansion (£ 25) against the purchase price.

Additionally, you can trade in your QL Centronics (£ 15) or Disk Adapter (£ 10) or both.

To order...

Please make cheques payable to MIRACLE SYSTEMS LTD in Pounds Sterling (£) or quote your credit card number and expiry date and post To :

MIRACLE SYSTEMS LTD
25 Broughton Way
Osbaldwick, York YO1 3BG
UK

To place an order by phone, please have your credit card ready. For customers outside the EU we charge the prices shown in brackets.

Tel: (0904) 423986



Recycled items

GOLD CARD	£ 150
QL CENTRONICS	£ 15
DISK ADAPTER	£ 10

Recycled items carry a 1 year warranty.